

VTM D60S HORIZONTAL DIRECTIONAL DRILL



D60S HORIZONTAL DIRECTIONAL DRILL



A DRILL DESIGNED SPECIFICALLY FOR **MAXIMUM PERFORMANCE IN CONGESTED ENVIRONMENT**

As the need for more infrastructure and utility installation grows, tackle fiber, electrical, gas, water, and other projects with the D60S. Manufactured in Tianjin, China, with high-quality parts and components that Vermeer is known for, this drill is built tough for your jobsite conditions and high-quality performance.

Our commitment is to help you tackle jobs in tight spaces and challenging soil types. This new generation of D60S drills can handle a variety of applications and jobsites to help maximize productivity and connect you to the world. It's equipped with features that promote ease of operation and powerful torque and thrust to keep you drilling quickly and efficiently.





IMPRESSIVE FOOTPRINT

A modest footprint of just 100-in (254-cm) transport width and 26-ft (7.9-m) length allows the D60S to fit a range of installation specifications — even congested urban jobsites. The D60S comes with a standard remote control for ease of use that helps you efficiently load and unload the drill.



Plus+1 control system

For precision and reliability, the control system in the D60S has been upgraded to PLUS+1. This drill also includes the AutoSteer system, which automates certain drill head motions at pre-determined rotation direction while maintaining a pre-set thrust pressure to get through hard ground conditions, which enables drilling consistency. To top it off, the updated console design helps provide a seamless, user-friendly bore path adjustment experience for the operator.



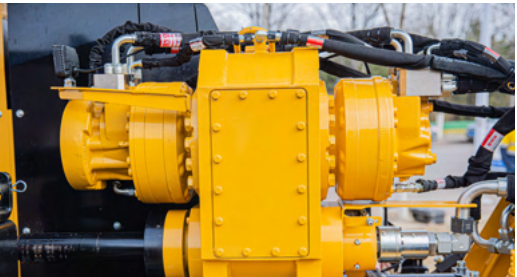
Powerful torque and thrust

The D60S is one of the most powerful drills in its class: 60,000 lbs (266.9 kN) of thrust and pullback and 9,000 ft-lb (12,202.4 Nm) of rotational torque, allowing operators to maximize their efficiency and productivity in tougher jobs.



Maintenance made simple

The D60S engine hood can pivot and is only one piece. This design provides convenient access to internal components for ease of serviceability and maintenance checks.



Rotation capabilities

The three-speed gearbox helps improve overall drilling efficiency by allowing the operator to adjust the machine's rotational torque to match different ground conditions.



Operator-controlled rod loader

The operator-controlled rod loader helps reduce the labor involved with manually loading and unloading drill rod, which also assists in increasing overall drilling efficiency. With an added rod function, single rods can be loaded quickly instead of changing the rod box.



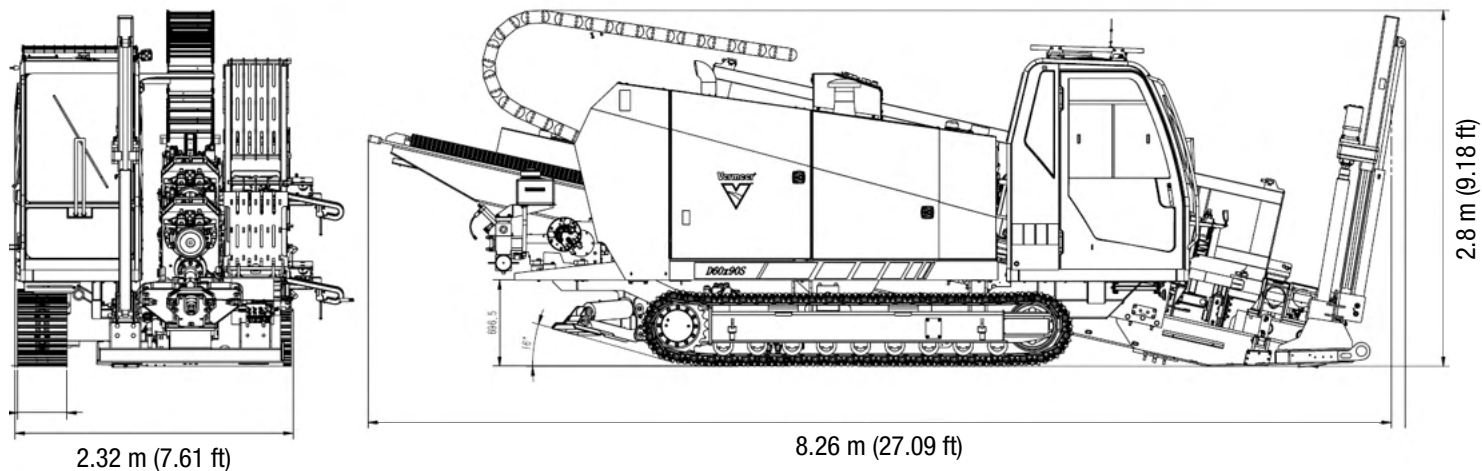
Enhanced visibility and climate controlled cab

The cabin offers ideal visibility and spacious work area for the operator to work in a variety of climate conditions. Dashboard controls are lined with the vice and entry pit and large windows provide clear visibility of the rack, vices and borepath.

VERMEER COMMITMENT TO OUR CUSTOMERS

You can get sound service from Vermeer dealer service technicians when and where you need it most. From our application insight to our confidence at the counter, Vermeer will work to answer your requests with expert care and promptness. We know your machines better than anyone, and we know dependability matters when your machines need service. That’s why we take pride in resolving issues the first time, helping you maximize your productivity.

When it comes to parts, your Vermeer dealer will work to get what you need in the least amount of time — because we understand that when you need a part, you need it now. Vermeer dealerships focus on serving your needs quickly, consistently and efficiently. That’s the Vermeer way.



SPECIFICATIONS	D60S
GENERAL DIMENSIONS AND WEIGHTS	
Length (minimum transport)	8.26 m (27.1 ft)
Width (minimum transport)	2.32 m (7.6 ft)
Height (minimum transport)	2.3 m (7.5 ft)
Height (minimum transport with cab & stakedown)	2.8 m (9.18 ft)
Height (minimum transport with operations station and stakedown)	2.32 m (7.6 ft)
Weight (minimum transport)	11,022 kg (24,300 lb)
Weight (minimum transport with 36 rods)	13,700 kg (30,203 lb)
Maximum entry angle	16°
PERFORMANCE	
Maximum pullback	27,200 kg (60,000 lb)
Maximum thrust	27,200 kg (60,000 lb)
Maximum carriage speed at maximum engine rpm	40 m/min (131 ft/min)
Minimum carriage speed in low at maximum engine rpm	20 m/min (65 ft/min)
Maximum spindle torque (high at maximum engine rpm)	6,100 N.m (4,500 ft-lb)
Maximum spindle torque (medium at maximum engine rpm)	9,150 N.m (6,700 ft-lb)
Maximum spindle torque (low at maximum engine rpm)	12,200 N.m (9,000 ft-lb)
Maximum spindle speed at max engine rpm	210 rpm
Medium spindle speed at max engine rpm	136 rpm
Low spindle speed at max engine rpm	96 rpm
Maximum ground drive speed	4.4 km/hr (2.7 mph)

SPECIFICATION	D60S
ENGINE (TIER 3)	
Brand	DONG FENG CUMMINS
Model	QSB6.7-C190
Power	142 kW (190 hp)
Rated rpm	2,200 rpm
DRILL PIPE	
Type	VROD
Rod diameter	7.3 cm (2.9 in)
Rod length	4.5 m (15 ft)
Weight	75 kg (165 lb)
MUD PUMP (USA)	
Maximum pressure	90 bar (1,305 psi)
Maximum flow	492 L/min (130 gpm)
TANK CAPACITY	
Hydraulic tank	320 L (85 gal)
Fuel tank	243 L (64 gal)

Vermeer Corporation

1210 Vermeer Road East
Pella, Iowa 50219
800-370-3659

Vermeer Latin America

Rua Francisco Juliato, 79
Vale Verde — 13279-000
Valinhos, SP — Brazil
+55(19)3517-9400

Vermeer EMEA

(Europe, Middle East, Africa and CIS)
Nijverheidsstraat 20
4458 AV 's-Heer Arendskerke
The Netherlands
+31(0)113-272700

Vermeer Asia Pacific

545 Orchard Road
#12-06
Singapore 238882
+65-6516-9560

Vermeer Tianjin Manufacturing Co., Ltd. drills shown are available only through select Vermeer dealers for sale into less emission-regulated countries.

Vermeer Tianjin Manufacturing Co., Ltd. reserves the right to make changes in engineering, design and specifications; add improvements; or discontinue manufacturing at any time without notice or obligation.

Please contact your local Vermeer dealer for more information on machine specifications.

Vermeer and the Vermeer logo are trademarks of Vermeer Manufacturing Company in the U.S. and/or other countries. Dongfeng Cummins is a trademark of Dongfeng Cummins Engine Co., Ltd.

© 2021 Vermeer Tianjin Manufacturing Co., Ltd. All Rights Reserved.

PN 296431657 12/21



D60S HORIZONTAL DIRECTIONAL DRILL