

A RELIABLE MINI LOADER LINEUP FOR THE TOUGHEST JOBS.



And there's

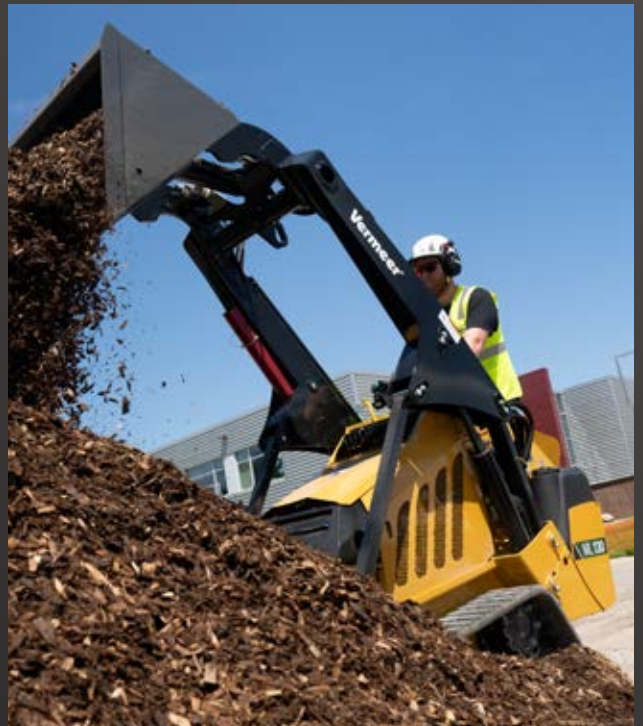
MORE

where that came from.

Vermeer



THE VERMEER MINI LOADER LINEUP



Your crew needs dependable, versatile equipment that can tackle every phase of a project. Vermeer mini loaders deliver. Engineered with increased lift capacity and an enhanced hydraulic system, these mini loaders build on proven features from previous models. The result? A mini loader lineup that's **equipped to help you do more.**



ML80
(25 HP CLASS)



ML100
(25 HP CLASS)



People want to see you using quality equipment. That is why I go to Vermeer every time. I pretty much refuse to use anything else. ”

— Justin Sharum
Humble Heart Services LLC.

POWERFUL PRODUCTIVITY

Get ready for responsive, efficient engine performance and impressive lift capacity. The mini loader lineup features hardworking engines with up to 40 hp (29.8 kW).

And with rated operating capacities up to 1,530 lb (694 kg), there's a machine for your work.

MAINTENANCE-FRIENDLY

Spend less time on maintenance and more time getting the work done. With toolless engine access panels, routine maintenance charts and a spring-tensioned greaseless track system, upkeep is simple – allowing you to stay focused on the job.

BUILT-IN CONFIDENCE

Bring peace of mind to every job site. Beyond the standard warranty, Vermeer mini loaders come equipped with additional coverage on the loader arms, mainframe and Rehlko engine. And with support from your local Vermeer dealer, you rest easy knowing that service and expertise are always close by.

OPERATOR-FOCUSED DESIGN

Your comfort and safety on the job are essential. Vermeer mini loaders are engineered with both in mind. The cushioned operator station helps reduce fatigue, while the integrated operator presence system helps ensure you're always in control.

SMARTER, STRONGER OPERATION

Compared to previous models, the enhanced hydraulic system on Vermeer mini loaders helps optimize filtration to minimize oil contamination, improving hydraulic component longevity and maximizing the efficiency of tractive effort – giving operators greater confidence to power through tough jobs.

CLICK HERE TO SEE
THE **FULL SPECS.**



ML130
(40 HP CLASS)



ML150
(40 HP CLASS)





UNLOCK MORE CAPABILITIES WITH THE RIGHT ATTACHMENTS

When it comes to mini loaders, versatility is the name of the game. And when you have the right attachments, you can tackle more jobs in less time.

Vermeer offers a comprehensive lineup of high-quality, durable attachments engineered for tree care, landscaping, and irrigation-system and utility installation. These attachments are rigorously tested to ensure they work seamlessly with Vermeer mini loaders, ensuring operators have the best possible ownership experience.

MINI LOADERS BACKED BY EXPERT SUPPORT

You need more than equipment. You need a team that knows your machines, understands your goals and supports you as you grow. From finding the right attachments to optimizing your operation, your local Vermeer dealer is here to help. And with more than 600 dealer locations worldwide, you'll find a true partner wherever you work.

**CLICK HERE TO FIND
YOUR VERMEER DEALER.**



This article contains third-party observations, advice or experiences that do not necessarily reflect the opinions of Vermeer Corporation, its affiliates or its dealers. Testimonials and/or endorsements by customers in specific circumstances may not be representative of normal circumstances experienced by all customers. Vermeer Corporation reserves the right to make changes in engineering, design and specifications; add improvements; or discontinue manufacturing at any time without notice or obligation. Equipment shown is for illustrative purposes only and may display optional accessories or components specific to their global region. Please contact your local Vermeer dealer for more information on machine specifications. Vermeer, the Vermeer logo and Equipped to Do More are trademarks of Vermeer Manufacturing Company in the U.S. and/or other countries. © 2026 Vermeer Corporation. All Rights Reserved.