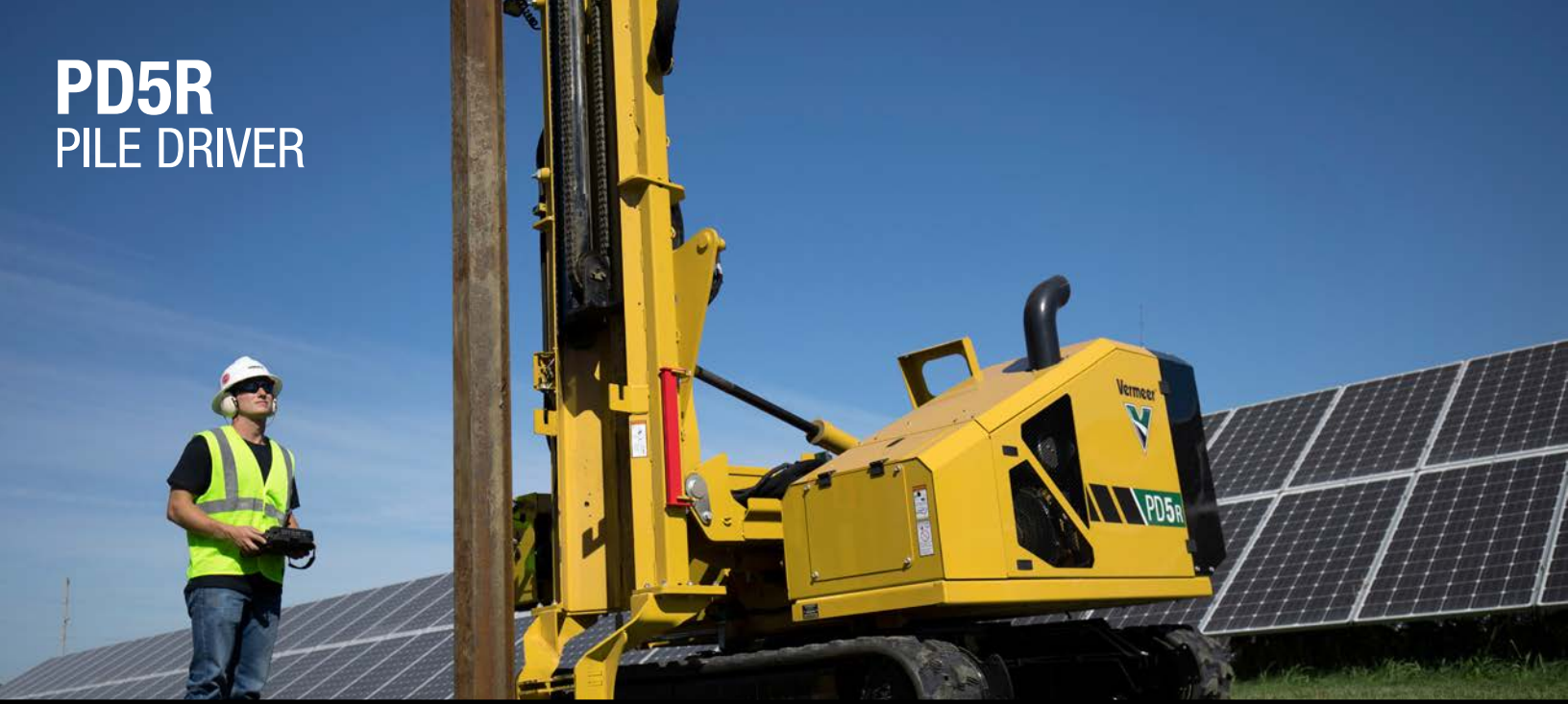


# PD5R PILE DRIVER



**TAKE CONTROL.** With a wireless remote, crews can operate the PD5R and gain visibility around the machine, while controlling most machine functions like hammer engagement, pile accuracy, auto plumb and ground drive, all while remaining out of an operator's seat during installation.



**TRANSPORTATION EASE.** Teardown and transporting is convenient with a rotating platform and a mast that can stay fully assembled and stow parallel with the tracks, making it more convenient for the entire crew to move to the next job.



**KEEP IT LIGHT.** The PD5R weighs in at 10,330 lb (4,685.6 kg), which allows for transporting up to two pile drivers on select trailers, and less potential damage to jobsites, all while helping increase efficiency of setup and teardown with a lightweight design.



**COMPACT DESIGN.** A small machine with transport dimensions of 85 in (215.9 cm) wide, 8.2 ft (2.5 m) tall and a 15 ft (4.6 m) mast is ideal for jobsites with less space, or for multiple smaller jobs that require continual transportation of the machine. Quickly move around the jobsite and continue efficiency of installations, helping reduce time spent on setup, teardown and transportation.



**MOVE ALONG.** With a forward ground drive speed of 2.4 mph (3.9 km/h), move quickly around the jobsite with less time spent traveling and more time installing piles, helping to keep your installation efficiently moving forward.



**MAINTAIN ACCURACY.** An optional laser receiver and an optional compatible third-party GPS system can provide visual input to the operator and input to the machine control system to help improve productivity and alignment of the machine to the specified pile location.



**VERMEER.COM**



**EQUIPPED TO  
DO MORE.**

# PD5R PILE DRIVER

## GENERAL DIMENSIONS AND WEIGHTS

Maximum pile height: 15.5 ft (4.7 m)

Maximum operating height: 19.8 ft (6 m)

Operating weight: 10,330 lb (4,685.6 kg)

Operating length: 7.2 ft (2.2 m)

Operating width: 12.5 ft (3.8 m)

Transport height: 8.2 ft (2.5 m)

Transport length: 11.7 ft (3.6 m)

Transport width: 85 in (216 cm)

Track width: 84 in (213.3 cm)

## ENGINE OPTION ONE

Make and model: CAT C2.2T CRDI

Gross horsepower: 48.8 hp (36.4 kw)

Number of cylinders: 4

Cooling medium: Liquid

Fuel type: Ultra low sulfur diesel

EPA certification family: Tier 4 Final (EU stage IIIB)

## ENGINE OPTION TWO

Make and model: CAT C2.2T

Gross horsepower: 60 hp (44.7 kW)

Number of cylinders: 4

Cooling medium: Liquid

Fuel type: Diesel

EPA certification family: Tier 3 (Stage IIIA CA)

## ELECTRICAL SYSTEM

Voltage: 12 volts

## FLUID CAPACITIES

Fuel tank: 25 gal (94.6 L)

Engine crankcase with filter: 2.5 gal (9.5 L)

Hydraulic tank: 35 gal (132.5 L)

## GROUND DRIVE

Maximum transport speed: 2.4 mph (3.9 km/h)

Track drive: rubber tracks

## HAMMER

Maximum angle (direction of tracks): 10° each way from vertical

Maximum angle (perpendicular to tracks): 10° out from vertical

Impact drive type: High-frequency hammer

Maximum hammer impact: 1500 bpm

Hammer energy class: 950 Joules

Maximum pile dimension (round opening): 9.3 in (23.6 cm)

Maximum pile dimension (square opening): 8.3 in (21.1 cm)

Maximum pile dimension (rectangle opening): 6.7 in x 9.3 in  
(17 cm x 23.6 cm)

## FEATURES

Auto plumb: Standard

Laser receiver: Optional

Remote control: Standard

Telematics: Standard

Rotating platform: Standard

Hammer pull-down: Standard

**NOTES:**

---

---

---

---

---

Vermeer Corporation reserves the right to make changes in engineering, design and specifications; add improvements; or discontinue manufacturing at any time without notice or obligation. Equipment shown is for illustrative purposes only and may display optional accessories or components specific to their global region. Please contact your local Vermeer dealer for more information on machine specifications. Vermeer, the Vermeer logo and Equipped to Do More are trademarks of Vermeer Manufacturing Company in the U.S. and/or other countries. Caterpillar is a trademark of Caterpillar, Inc.

© 2020 Vermeer Corporation. All Rights Reserved.

