



MANURE SPREADERS



VERMEER MANURE SPREADERS

Long before we ever revolutionized the industry, we were innovating. Advancing where others could only follow. Creating where others could only imagine. Building where others could only settle. All of it, in a relentless pursuit of finding a better way to get important work done. That same innovative spirit lives at the core of our newest product line.

The all-new Vermeer manure spreaders not only add to our already robust lineup of hay and forage solutions, they're designed with industry-leading technology from **Bunning®**. Simply put, the Bunning name has been the standard in premium manure spreaders for over four decades.

So, when we say welcome to the family, we're speaking from one innovator to another.

MEET THE LINEUP

What can you expect from a Vermeer manure spreader? Durability, reliability, impressive spread and convenient maintenance. Built to endure the toughest conditions, experience top-tier performance with every load.

MODEL	CAPACITY	PTO HORSEPOWER
MANURE SPREADERS		
MS300 manure spreader	300 ft³ (8.5 m³)	80 hp (60 kW)
MS400 manure spreader	400 ft³ (11 m³)	110 hp (82 kW)
COMMERCIAL MANURE SPREADERS		
MSC800 manure spreader	800 ft³ (22.5 m³)	250 hp (190 kW)
MSC1000 manure spreader	1,000 ft³ (28 m³)	250 hp (190 kW)
MSC1400 manure spreader	1,400 ft³ (40 m³)	380 hp (280 kW)

1 Heat-treated boron auger flighting and teeth maximize wear resistance, extend longevity and help ensure your spreader withstands tough jobs. In fact, heat-treated boron provides up to four* times more strength than traditional mild steel. This helps reduce downtime for repairs and increase productivity for your operation.

2 Heavy-duty 80-grade chain provides reliability and minimized maintenance due to its durability — because no one enjoys the hassle of digging out your manure spreader when chains break.

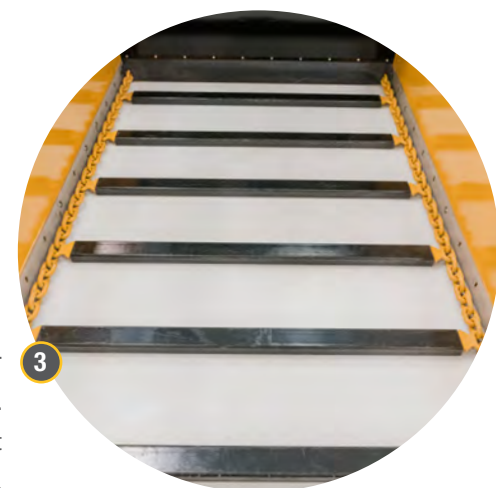


5 Strength and versatility come from the vertical lift endgate. The strong design and construction allow the endgate to be used as a grading device for light applications of materials as well as to retain very runny material, so you don't spill on the road.

4 Built for the long-haul, this robust spreader features a fully-welded body that maximizes strength and minimizes water ingress to outlast spreaders that are stitch welded.



Withstand wet, heavy loads without sticky product buildup. A 1/2-in (13-mm) poly floor is clamped to a 3/16-in (5-mm) full steel sub-floor, providing longevity and even wear. Help prevent uneven chain wear and minimize bridging with full-width floor slats that help deliver an even flow of product out the back of the spreader.



SPECIFICATION	MS300 MANURE SPREADER	MS400 MANURE SPREADER	MSC800 MANURE SPREADER	MSC1000 MANURE SPREADER	MSC1400 MANURE SPREADER
DIMENSIONS AND WEIGHTS					
Machine weight	9,300 lb (4,200 kg)	9,700 lb (4,400 kg)	19,500 lb (8,850 kg)	20,000 lb (9,100 kg)	31,000 lb (14,000 kg)
Width with standard tires	108 in (274 cm)	108 in (274 cm)	128 in (325 cm)	143 in (363 cm)	147 in (373 cm)
Width with optional tires	NA	NA	143 in (363 cm)	NA	NA
Total height	103 in (262 cm)	108 in (274 cm)	144 in (366 cm)	144 in (366 cm)	162 in (410 cm)
Loading height	71 in (180 cm)	75 in (190 cm)	90 in (200 cm)	112 in (284 cm)	130 in (330 cm)
Tires	425/65 R22.5 New	425/65 R22.5 New	600/50 R22.5	650/55 R26.5	650/55 R26.5
BOX					
Heaped capacity	300 ft ³ (8.5 m ³)	400 ft ³ (11 m ³)	800 ft ³ (22.5 m ³)	1,000 ft ³ (28 m ³)	1,400 ft ³ (40 m ³)
Maximum net load	19,000 lb (8,600 kg)	25,000 lb (11,000 kg)	50,000 lb (20,000 kg)	57,000 lb (26,000 kg)	85,000 lb (39,000 kg)
Inside width of bed	59 in (150 cm)	59 in (150 cm)	72 in (180 cm)	72 in (180 cm)	72 in (180 cm)
Inside bed depth, top of flare	37 in (94 cm)	43 in (110 cm)	47 in (120 cm)	58 in (150 cm)	68 in (170 cm)
Inside bed length	165 in (420 cm)	197 in (500 cm)	271 in (688 cm)	236 in (600 cm)	315 in (800 cm)
Floor drive	RT350/50	RT350/50	RT800/60 Optional dual drive RT800/60	RT800/60 Optional dual drive RT800/60	Dual drive RT800/60
Floor chain size	5/8 in (16 mm)	5/8 in (16 mm)	3/4 in (19 mm)	3/4 in (19 mm)	3/4 in (19 mm)
Brake size	NA	NA	406 mm x 120 mm	406 mm x 120 mm	400 mm x 140 mm
Floor plate	.19 in (5 mm)	.19 in (5 mm)	.19 in (5 mm)	.19 in (5 mm)	.19 in (5 mm)
Side plate	.16 in (4 mm)	.16 in (4 mm)	.16 in (4 mm)	.16 in (4 mm)	.16 in (4 mm)
DISCHARGE SYSTEM					
Spreading mechanism	Twin vertical augers	Twin vertical augers or horizontal beaters and discs	Twin vertical augers or horizontal beaters and discs	Twin vertical augers or horizontal beaters and discs	Twin vertical augers or Horizontal beaters and discs
Max spread width	52 ft (16 m)	52 ft (16 m)	65 ft (20 m)	65 ft (20 m)	65 ft (20 m)
TRACTOR REQUIREMENTS					
Recommended PTO horsepower	80 hp (60 kW)	110 hp (82 kW)	250 hp (190 kW)	250 hp (190 kW)	380 hp (280 kW)
PTO speed	540 rpm or 1,000 rpm	540 rpm or 1,000 rpm	1,000 rpm	1,000 rpm	1,000 rpm
Hydraulic type	2 double-acting	2 double-acting	2 double-acting	2 double-acting	2 double-acting
Hydraulic flow	20 gpm (80 L/min)	20 gpm (80 L/min)	20 gpm (80 L/min) Dual drive: 30 gpm (100 L/min)	20 gpm (80 L/min) Dual drive: 30 gpm (100 L/min)	30 gpm (100 L/min)

Vermeer Corporation
1410 Vermeer Road East
Pella, Iowa 50219
800-370-3659 • vermeer.com

GT Bunning and Sons Limited reserves the right to make changes in engineering, design and specifications; add improvements; or discontinue manufacturing at any time without notice or obligation. Vermeer Corporation reserves the right to discontinue manufacturing at any time without notice or obligation. Equipment shown is for illustrative purposes only and may display optional accessories or components specific to their global region. Please contact your local Vermeer dealer for more information on machine specifications.

Vermeer, the Vermeer logo and Equipped to Do More are trademarks of Vermeer Manufacturing Company in the U.S. and/or other countries. Bunning is a trademark of GT Bunning & Sons Ltd.
 © 2025 Vermeer Corporation. All Rights Reserved.