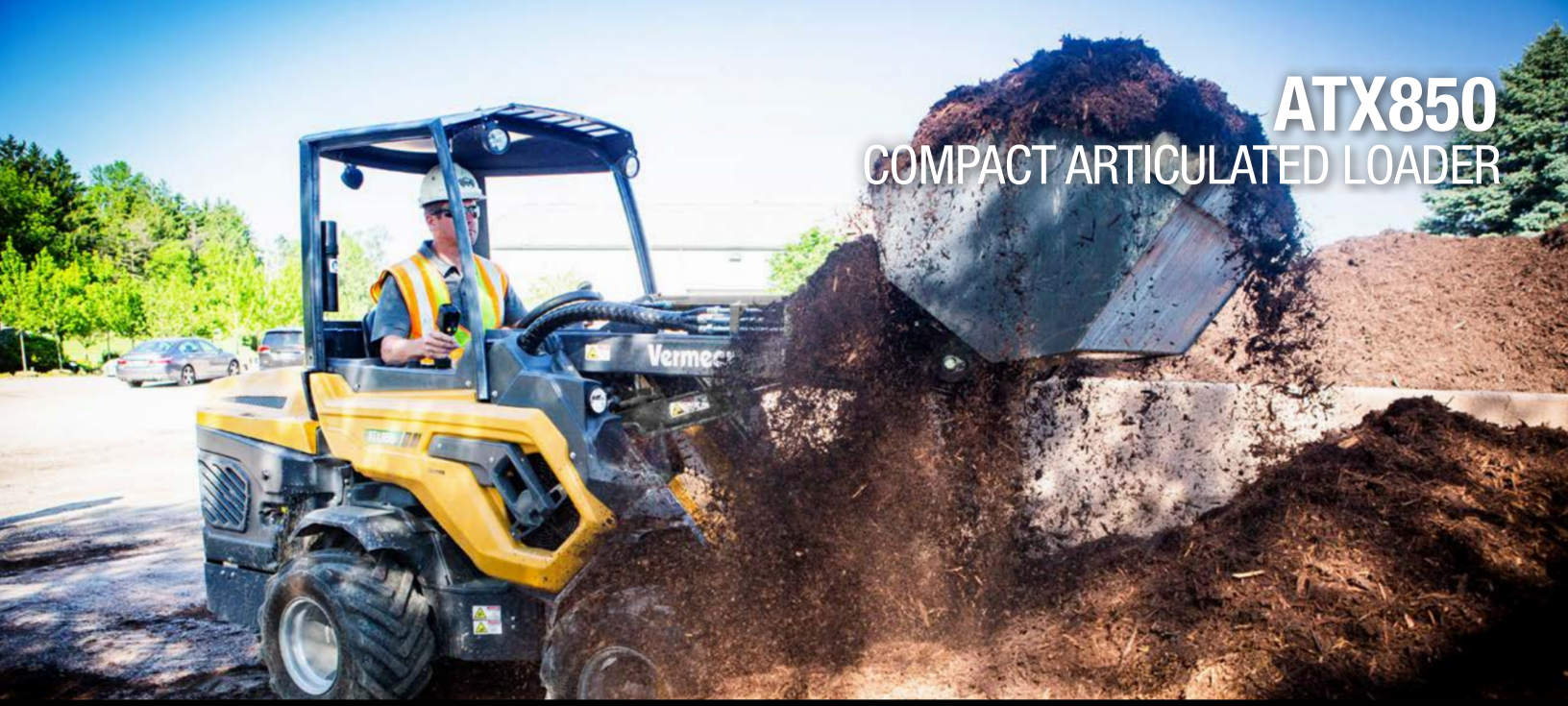


ATX850 COMPACT ARTICULATED LOADER



TELESCOPIC BOOM. The telescopic boom on the ATX850 extends 29.1 in (73.9 cm) for loading materials to a dump height of 117.3 in (297.9 cm) in hinge pin height. The telescopic boom can also aid in dumping material over the back side of a retaining wall or grabbing material over an obstruction.



COMPACT SIZE. With narrow tires, the ATX850 is 42.1-in (106.9-cm) wide, while the wider tires make the machine 50.4-in (128-cm) wide. Both configurations allow the ATX850 to fit through a standard four-foot gate for backyard access on landscape jobs. The overall length of the ATX850 is 120.3 in (305.6 cm).



LIFT-TO-WEIGHT RATIO. The ATX850 has a rated operating capacity (straight) of 1,590 lb (721 kg)* while having a standard weight of 4,254 lb (1,930kg) with rear weights and without attachments. This lift-capacity-to-weight ratio allows contractors to utilize a lighter machine while still being able to carry heavy materials on the jobsite.

*Operating capacities show the rear counterweights installed and rated for a bucket application at 50% of the tipping load per ISO 14397.



MULTIFUNCTION JOYSTICK. The multifunction joystick utilizes electric-over-hydraulic toggles for ease of access to machine functions like the telescopic boom, auxiliary hydraulic controls and the Dynamic Blocking System (DBS). The operator does not have to remove their hand from the loader arm controls in order to function any of these features.



FOUR-WHEEL DRIVE HYDROSTATIC DIRECT DRIVE MOTORS. As each wheel has a hydrostatic direct drive motor, hydraulic oil can flow freely to each wheel as needed during transport to help reduce ground disturbance on turf when making turns. The four-wheel drive hydrostatic direct drive motors also allow for the use of the DBS and torque divider to increase tractive effort in difficult conditions.



MULTI-TOOL ATTACHMENT PLATE. The ATX850 can be fitted with various authorized attachments to meet the jobsite need, may that be for snow removal, landscaping and tree care work or various other applications.

ATX850 COMPACT ARTICULATED LOADER

GENERAL DIMENSIONS

- Length (with rear weights): 120.3 in (305.6 cm)
- Width (varies with tire size): 50.4 in (128 cm)
- Height (with cab): 80.3 in (204 cm)
- Weight (with rear weights and no attachments): 4,254 lb (1,929.6 kg)
- Ground pressure: 204 lb/sq ft (92.5 kg/m²)
- Ground clearance: 9.5 in (24.1 cm)
- Angle of departure with rear weights: 19° angle

ENGINE

- Make/Model: Kohler KDI1903
- Fuel type: Diesel
- Fuel tank capacity: 9 gal (34 L)
- Gross horsepower: 57 hp (42.5 kW)
- Cooling system: Liquid
- Transmission: Hydrostatic

PERFORMANCE

- Rated operating capacity (straight)*: 1,590 lb (721.2 kg)
- Rated operating capacity (articulated)*: 1,351 lb (612.8 kg)
- Max travel speed (low-high): 8.7 mph - 17.4 mph (14 km/h - 28 km/h)
- Turning radius (inside/outside): 32.5 - 82.3 in (82.5 cm - 209 cm)
- Standard tires: 26x12.00-12 ET-50
- Pivot Point Height (extended boom): 117.3 in (297.9 cm)
- Outreach with horizontal boom (extended boom): 46.6 in (118.4 cm)

*Operating capacities shown have the boom low to the ground, boom not extended and the rear counterweights installed. The rating shown is for a bucket application at 50% the tipping load per ISO 14397.

HYDRAULIC SYSTEM

- Aux. Hydraulics oil flow: 20 gpm (3.8 L/min)
- Hydraulic oil tank capacity: 11.1 gal (42 L)

NOTES:

MultiOne, SRL Corporation reserve the right to make changes in engineering, design and specifications; add improvements; or discontinue manufacturing at any time without notice or obligation. Equipment shown is for illustrative purposes only and may display optional accessories or components. Please contact your local Vermeer dealer for more information on machine specifications. Vermeer, the Vermeer logo and Equipped to Do More are all trademarks of Vermeer Manufacturing Company in the U.S. and/or other countries. Kubota is a trademark of Kubota Engine Corporation. © 2020 Vermeer Corporation. All Rights Reserved. Printed in the U.S.A. Please recycle.

