

# D20x22 S3

## HORIZONTAL DIRECTIONAL DRILL



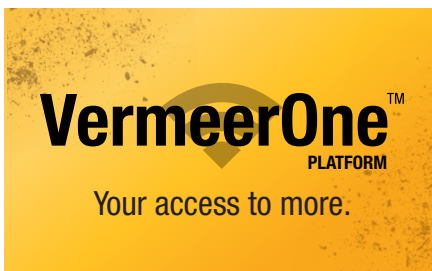
**DESIGNED FOR UPTIME.** Redesigned hydraulic system protects the machine and maximizes component life, helping with uptime.



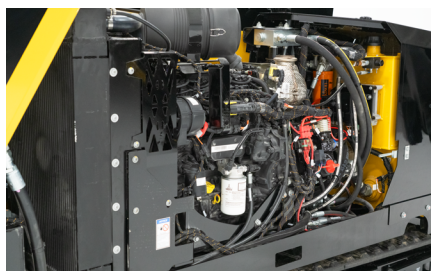
**PRICED RIGHT AND SIZED RIGHT.** The D20x22 S3, smallest drill in its class, is well-suited to install cable, fiber and product pipe efficiently and productively in a small footprint, without outpricing what you need for the market.



**PREMIUM OPERATOR EXPERIENCE.** Common dual joysticks on the current Vermeer drill lineup assist in operator efficiency and training. Designed with the operator in mind.



**YOUR ACCESS TO MORE.** VermeerOne™ is more than a tool or platform. It's an experience — one designed to simplify equipment management, empower users with real-time data to make smarter decisions, and help maximize productivity and profitability.



**RIGHT POWER.** The right power for the smaller diameter jobs with 19,500 lb (86.7 kN) of thrust and pullback, just what you need for the short shots.



**REDESIGNED PIVOT HOOD.** Offers ease of access when performing routine service and maintenance.



# D20x22 S3 HORIZONTAL DIRECTIONAL DRILL

## GENERAL WEIGHTS AND DIMENSIONS

Min transport length: 229 in (582 cm)

Min transport width: 48 in (121.9 cm)

Min transport height: 78 in (198.1 cm)

Weight (drill option one): 12,488 lb (5,664 kg)

Weight (drill option two): 12,808 lb (5,810 kg)

## ENGINE OPTION ONE

Make/Model: Deutz TD2.9

Fuel type: Low sulfur diesel

Max engine rpm: 2,600 rpm

Gross horsepower: 74 hp (55.4 kW)

Emissions rating: Tier 4i (EU Stage IIIA)

## ENGINE OPTION TWO

Make/Model: Deutz TD2.9

Fuel type: Ultra-low sulfur diesel

Max engine rpm: 2,600 rpm

Gross horsepower: 74 hp (55.4 kW)

Emissions rating: Tier 4 Final (EU Stage V)

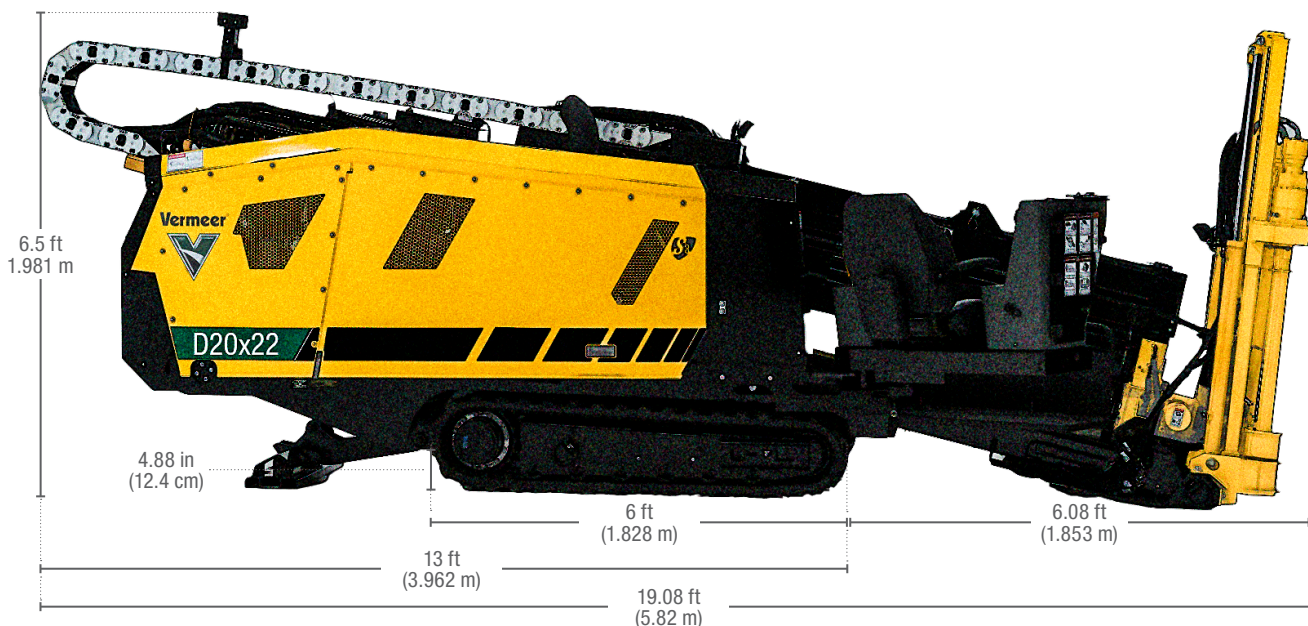
## FLUID CAPACITIES

Fuel tank: 25 gal (94.6 L)

Hydraulic tank: 30 gal (113.6 L)

Hydraulic system: 40 gal (151.4 L)

## TRANSPORT DIMENSIONS



## OPERATIONAL

Thrust/Pullback: 19,500 lb (86.7 kN)

Max carriage speed at max engine rpm: 160 fpm (48.8 m/min)

Max spindle torque (low at max engine rpm): 2,200 ft-lb (2,983 Nm)

Max spindle speed at max engine rpm: 250 rpm

Min bore diameter: 3 in (7.6 cm)

Max ground drive speed at max engine rpm (fwd): 3.3 mph (5.3 km/h)

Drill rack angle: 12°-17° (21%-30.6%)

## DRILLING FLUID SYSTEM

Max flow: 25 gpm (94.6 L/min)

Max pressure: 1,000 psi (6.9 MPa)

## DRILL PIPE OPTION ONE

Type: Firestick® drill rod

Length: 10 ft (3 m)

Rod diameter: 1.9 in (4.8 cm)

Onboard capacity: 400 ft (121.9 m)

## DRILL PIPE OPTION TWO

Type: Firestick drill rod

Length: 10 ft (3 m)

Rod diameter: 2.06 in (5.2 cm)

Onboard capacity: 400 ft (121.9 m)