

# ATX530

## COMPACT ARTICULATED LOADER



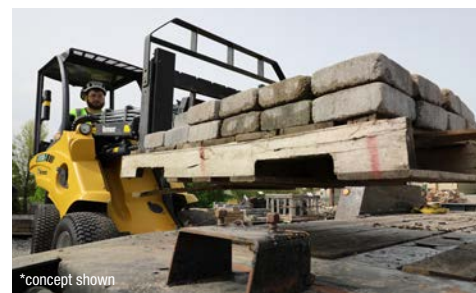
\*concept shown



\*concept shown



\*concept shown



\*concept shown

**TELESCOPIC BOOM.** The telescopic boom on the ATX530 extends 21.6 in (54.9 cm) for loading materials to a dump height of 108.3 in (275.1 cm) in hinge pin height. The telescopic boom can also aid in dumping material over the backside of a retaining wall or grabbing material over an obstruction.

**COMPACT SIZE.** With narrow tires, the ATX530 is 40.9-in (103.9-cm) wide, while the wider tires make the machine 47.2-in (119.9 cm) wide. Both configurations allow the ATX530 to fit through a standard four-foot gate for backyard access on landscape jobs. The overall length of the ATX530 is 98.4 in (249.9 cm).

**LIFT-TO-WEIGHT RATIO.** The ATX530 has a rated operating capacity (straight) of 933 lb (423.2 kg)\* while having a standard weight of 2711 lb (1229.7 kg) with rear weights and without attachments. This lift-capacity-to-weight ratio allows contractors to utilize a lighter machine while still being able to carry heavy materials on the jobsite.

\*Operating capacities show the rear counterweights installed and rated for a bucket application at 50% of the tipping load per ISO 14397



\*concept shown



\*concept shown



\*concept shown

**MULTIFUNCTION JOYSTICK.** The multifunction joystick utilizes electric-over-hydraulic toggles for ease of access to machine functions like the telescopic boom, auxiliary hydraulic controls and the DBS. The operator does not have to remove their hand from the loader arm controls in order to function any of these features.

**FOURWHEEL DRIVE HYDROSTATIC DIRECT DRIVE MOTORS.** As each wheel has a hydrostatic direct drive motor, hydraulic oil can flow freely to each wheel as needed during transport which helps reduce ground disturbance on turf when making turns. The fourwheel drive hydrostatic direct drive motors also allow for the use of the DBS and torque divider to increase tractive effort in difficult conditions.

**MULTI-TOOL ATTACHMENT PLATE.** The ATX530 can be fitted with various authorized attachments to meet the jobsite need, may that be for snow removal, landscaping and tree care work, or various other applications.

## GENERAL DIMENSIONS

Angle of departure with rear weights: 19° angle

**Transmission:** Hydrostatic

\*Operating capacities show the rear counterweights installed and rated for a bucket application at 50% of the tipping load per ISO 14397

**Hydraulic oil tank capacity: 7.9 gal (30 L)**

