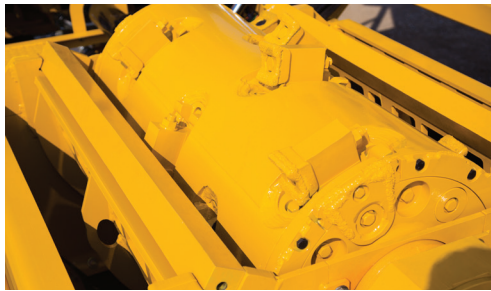


TG5000 TUB GRINDER



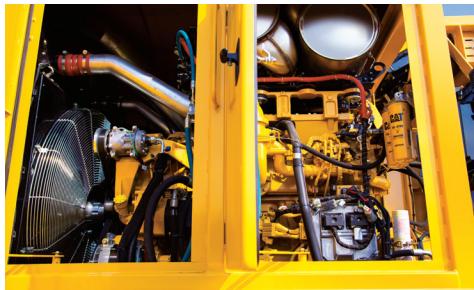
OPTIMAL CUTTING PERFORMANCE. The new Series III duplex drum is built off the proven cutting performance of previous Vermeer duplex drum designs, and makes maintenance more convenient with enhancements such as an independently secured wedge system and enhanced drum balancing.



PROTECT YOUR INVESTMENT. Vermeer's Damage Defense system reduces the likelihood of major machine damages by sensing metal contaminants and automatically initiating the shutdown process.



REMOTE CONVENIENCE. Maximize productivity with the wireless remote control. Adjust grind settings and monitor machine health and operational data through the remote display.



ENGINE POWER. The TG5000 is powered by a 540 hp (403 kW) Caterpillar C15 Tier 4 Final engine, with a maximum fuel consumption of 27 gal/hr (102 L/hr). A 540 hp (403 kW) Tier 3 engine option is available for lesser-emission regulated countries.



JOBSITE SAFETY. The patented Thrown Object Restraint System (TORS) reduces the amount and distance of thrown objects, and has a smooth underside for better material flow.



OPERATING EFFICIENCY. With features such as a hydraulically actuated variable flow and reversing Flexaire cooling fan, the TG5000 is built with operating efficiency top of mind. The fan adjusts the pitch of the blades based on temperature, which can increase the power available to the mill for better processing efficiency.

TG5000 TUB GRINDER

GENERAL DIMENSIONS

Max transport length: 39.2 ft (11.9 m)

Max transport width: 8.4 ft (2.6 m)

Max transport height: 157 in (398.8 cm)

Weight — tandem axle: 51,000 lb (23,133.2 kg)

Weight — triple axle: 53,000 lb (24,040.4 kg)

ENGINE OPTION ONE

Make and model: CAT C15 Tier 4 Final turbocharged after-cooled

Max gross horsepower: 540 hp (403 kW)

Fuel tank capacity: 251 gal (950.1 L)

Max fuel consumption: 28 gph (106 L/h)

ENGINE OPTION TWO

Make and model: CAT C15 Tier 3 turbocharged after-cooled

Max gross horsepower: 540 hp (403 kW)

Fuel tank capacity: 251 gal (950.1 L)

Max fuel consumption: 27 gph (102.2 L/h)

FEED SYSTEM

Millbox opening: 30.6 in x 46.6 in (77.7 cm x 118.4 cm)

Inside diameter of tub: 7.8 ft (2.4 m)

Inside flare diameter (at tub opening): 12.3 ft (3.7 m)

Depth of tub: 5 ft (1.5 m)

SCREENS

Screen dimensions: 47 in x 29 in x .75 in (119.4 cm x 73.7 cm x 1.9 cm)

Screen area: 2700 sq in (17,419.3 sq cm)

SERIES III DUPLEX DRUM

Drum diameter: 22.5 in (57.2 cm)

Drum cutting width: 44 in (111.8 cm)

Number of hammers: 7

Number of tips: 14

DISCHARGE SYSTEM — SINGLE BELT DESIGN

Belt width: 36 in (91.4 cm)

Belt design — standard: 3-ply 330# with V-cleat

CONTROLS

Stationary controls: LCD multifunction

Radio remote control: Multifunction with built-in LCD display, max 300 ft (91.4 m) operating range

AXLE/SUSPENSION

Axle type — option one: Tandem axle over-slung spring suspension

Axle type — option two: Triple axle over-slung spring suspension

OPTIONS

Air compressor — 13 hp (10 kW) Honda

Special paint

Extended warranty

Preventive maintenance

Vermeer Confidence Plus® asset protection program

Work light package

Heavy duty belt