

PD5 PILE DRIVER



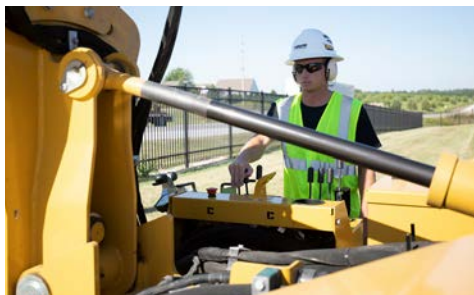
ON-MACHINE CONTROL. Walk-beside, machine-integrated controls allow the operator to control machine functions, including engagement of hammer, pile placement and ground drive. Operators remain off the machine and walk beside it, with conveniently placed controls to allow for intuitive operation and operator comfort.



TRANSPORTATION EASE. Teardown and transporting is convenient with a rotating platform and a mast that can stay fully assembled and stow parallel with the tracks, making it more convenient for the entire crew to move to the next job.



KEEP IT LIGHT. The PD5 weighs in at 10,380 lb (4,708 kg), which allows for transporting up to two pile drivers on select trailers, and less potential damage to jobsites, all while helping increase efficiency of setup and teardown with a lightweight design.



COMPACT DESIGN. A small machine with a transport width of 87 in (221 cm), a transport height of 8.2 ft (2.5 m) and a 15 ft (4.6 m) mast is ideal for jobsites with less space, or for multiple smaller jobs that require continual transportation of the machine. Quickly move around the jobsite and continue efficiency of installations helping reduce time spent on setup, teardown and transportation.



MOVE ALONG. With a forward ground drive speed of 2.4 mph (3.9 km/h), the PD5 moves quickly around the jobsite with less time wasted traveling and more time installing piles - keeping your installation efficiently moving forward.



MAINTAIN ACCURACY. The PD5 has an optional laser receiver and an optional compatible third-party GPS system that can provide visual input to the operator, which can help improve productivity and alignment of the machine to the specified pile location.



VERMEER.COM



**EQUIPPED TO
DO MORE.**

PD5 PILE DRIVER

GENERAL DIMENSIONS AND WEIGHTS

Maximum pile height: 15.5 ft (4.7 m)

Maximum operating height: 19.8 ft (6 m)

Operating weight: 10,380 lb (4,708 kg)

Operating length: 9.2 ft (2.8 m)

Operating width: 12.5 ft (3.8 m)

Transport height: 8.2 ft (2.5 m)

Transport length: 11.7 ft (3.6 m)

Transport width with track shield folded up: 87 in (221 cm)

Track width: 84 in (213 cm)

ENGINE OPTION ONE

Make and model: CAT C2.2T CRDI

Gross horsepower: 48.8 hp (36.4 kw)

Number of cylinders: 4

Cooling medium: Liquid

Fuel type: Ultra low sulfur diesel

EPA Certification Family: Tier 4 Final (EU stage IIIB)

ENGINE OPTION TWO

Make and model: CAT C2.2T

Gross horsepower: 60 hp (44.7 kW)

Number of cylinders: 4

Cooling medium: Liquid

Fuel type: Diesel

EPA Certification Family: Tier 3 (Stage IIIA CA)

ELECTRICAL SYSTEM

Voltage: 12 volts

FLUID CAPACITIES

Fuel tank: 25 gal (94.6 L)

Engine crankcase with filter: 2.5 gal (9.5 L)

Hydraulic tank: 35 gal (132.5 L)

GROUND DRIVE

Maximum transport speed: 2.4 mph (3.9 km/h)

Track drive: rubber tracks

HAMMER

Maximum angle (direction of tracks): 10° each way from vertical

Maximum angle (perpendicular to tracks): 10° out from vertical

Impact drive type: High-frequency hammer

Maximum hammer impact: 1500 bpm

Hammer energy class: 950 joules

Maximum pile dimension (round opening): 9.3 in (23.6 cm)

Maximum pile dimension (square opening): 8.3 in (21.1 cm)

Maximum pile dimension (rectangle opening): 6.7 in x 9.3 in (17 cm x 23.6 cm)

FEATURES

Laser receiver: Optional

Controls: Machine-integrated

Telematics: Standard

Mast: Hammer pull-down

Rotating platform: Standard

NOTES:

Vermeer Corporation reserves the right to make changes in engineering, design and specifications; add improvements; or discontinue manufacturing at any time without notice or obligation. Equipment shown is for illustrative purposes only and may display optional accessories or components specific to their global region. Please contact your local Vermeer dealer for more information on machine specifications. Vermeer, the Vermeer logo and Equipped to Do More are trademarks of Vermeer Manufacturing Company in the U.S. and/or other countries. Caterpillar is a trademark of Caterpillar, Inc.

© 2020 Vermeer Corporation. All Rights Reserved.

