

# MR1000 MIXER AND RECLAIMER



**EFFICIENT OPERATION.** The pneumatic screen-clamping system, together with pneumatic valves, convenient controls and automatic shutoff of water intake and pit pump, help minimize the required amount of labor.



**DURABILITY.** The use of components like the industry-leading Mission Magnum Magnachrome circulation pump uses high-quality wear resistant components to maximize the durability and life of the equipment.



**CLEANING EXCELLENCE.** High cleaning performance is achieved through 12, 4 in Krebs hydrocyclones with a long body in combination with a relatively large screen area.



**MIXING PERFORMANCE.** The mixing system is equipped with a powerful vacuum hose including a purpose-built nozzle, to work efficiently with big bags. A heavy-duty 2.2 kW agitator allows for optimum mixing.



**COMPACT SIZE/EFFICIENT TRANSPORT.** Based on 20 ft ISO container dimensions, transport dimensions are minimized. The shaker module ships inside the tank. During setup, the module can be lifted out and installed by turning it one-quarter of a turn.



**HOOK LIFT SYSTEM.** The MR1000 reclaimer is available with a height-adjustable hook lift system with low- or high-profile rollers to fit local transport requirements.



VERMEER.COM



EQUIPPED TO  
DO MORE.

# MR1000 MIXER AND RECLAIMER

## TRANSPORT WEIGHTS AND DIMENSIONS

Weight (complete transport, empty): 11.700 kg

Weight (shaker module): 2.900 kg

Length (including hook and rollers): 6.5 m

Width: 2.5 m

Height: 2.7 m

## OPERATIONAL DIMENSIONS

Length: 6.8 m

Width: 4.0 m

Height: 4.9 m

## FLUID CAPACITIES

Total tank capacity: 23 m<sup>3</sup>

Mix/active volume: 18 m<sup>3</sup>

## CLEANING SYSTEM

Rated processing capacity: 1.000 L/min

Rated solid separation capacity: Up to 30 t/hr

Shaker: One double-deck linear shaker

Scalper deck (polyurethane screens): 2.16 m<sup>2</sup>

Primary deck (mesh wire screens): 2.2 m<sup>2</sup>

Desilter: 12, 4 in Krebs long body hydrocyclones

## PUMPS

Circulation pump: 37 kW Mission Magnachrome mechanical seal

Mix/transfer pump: 22 kW Mission Magnum mechanical seal

## POWER

Power connection: 400 amp Powerlock connections

Recommended genset: 150 kVA, 400 V, 50 Hz

## FEATURES

Grounding lug: Standard

Phase sequence under- and over-voltage protection: Standard

Motor protection switches: Standard

4 in - 6 in Perrot/Kardan style connections: Standard

Pneumatic deck angle adjustment: Standard

Vacuum mixing system: Standard

Connection for pit pump: Standard

Integrated strainers: Standard

Stainless steel electrical cabinet: Standard

IP68 spray water tight LED work lights: Optional

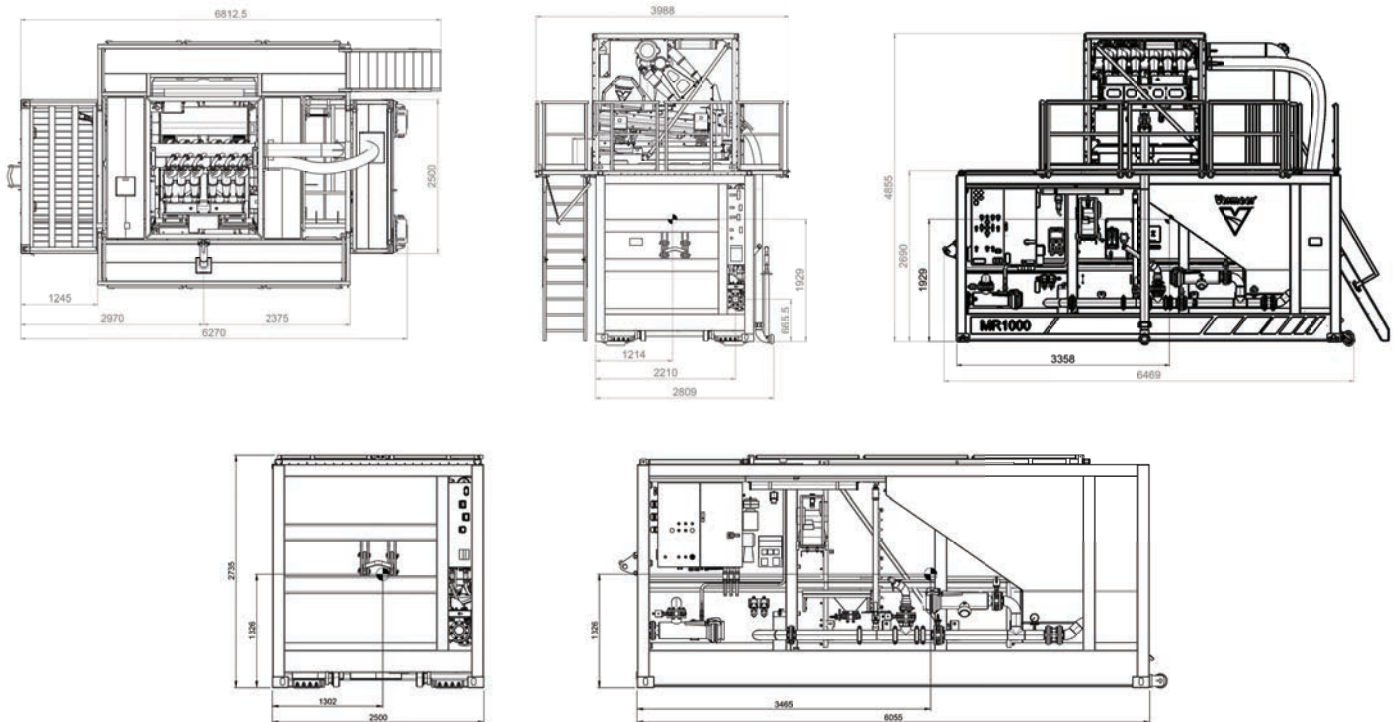
230 V and 380 V auxiliary power hub with plugs: Optional

Wireless remote control transfer valve: Optional

Adjustable hook-arm container loader: Optional

5.5 kW submersible pump: Optional

Cable and hoses package: Optional



Vermeer Manufacturing International Goes reserves the right to make changes in engineering, design and specifications; add improvements; or discontinue manufacturing at any time without notice or obligation. Equipment and depictions shown are for illustrative purposes only and may display optional accessories or components specific to their global region. Please contact your local Vermeer dealer for more information on machine specifications. Vermeer, the Vermeer logo and Equipped to Do More are trademarks of Vermeer Manufacturing Company in the U.S. and/or other countries. © 2022 Vermeer Manufacturing International Goes. All Rights Reserved.

**Vermeer**  
  
EQUIPPED TO  
DO MORE.