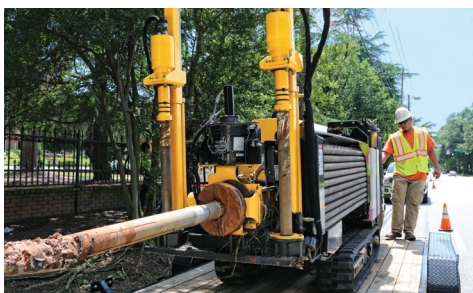


D10x15 S3 NAVIGATOR®

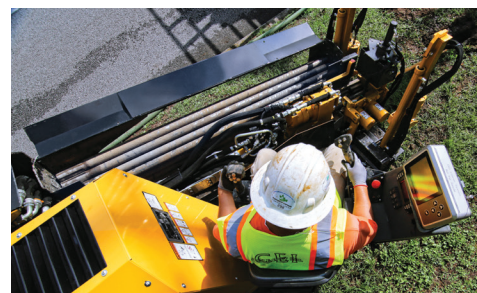
HORIZONTAL DIRECTIONAL DRILL



MORE LENGTH PER DAY. Featuring an increase of almost 11% in carriage speed over its predecessor — the D9x13 S3 Navigator® HDD — the drill offers fast cycle times and enhanced productivity on the jobsite.



GET TO WORK FASTER. The D10x15 S3 features a ground drive speed of up to 3.3 mph (5.3 km/h) — helping make jobsite entry and departure go more quickly.



NARROW FOOTPRINT. With a slender profile of 44 in (111.8 cm) in width, the drill can easily maneuver within narrow jobsites and position side by side with a mix system on a trailer, helping to increase productivity when working in urban spaces.



COMPACT BUT POWERFUL. The D10x15 S3 stands out due to its compact design and light weight. With 10,000 lb (44.5 kN) of thrust/pullback and 1,500 ft-lb (2,033.7 Nm) of rotational torque, it has the power required for tough ground conditions and pulling reamers.



REDUCED NOISE. The D10x15 S3 is designed to limit its operating noise, creating less neighborhood disturbance and enabling easier communication among crew members.



SERVICEABILITY. A one-piece, hinged hood offers durability as well as convenient access to daily key service points.

D10x15 S3 NAVIGATOR® HORIZONTAL DIRECTIONAL DRILL

GENERAL WEIGHTS AND DIMENSIONS

Min transport length: 153 in (389 cm)

Min transport width: 44 in (111.8 cm)

Min transport height: 66 in (167.6 cm)

Weight: 7,200 lb (3,265.9 kg)

ENGINE OPTION ONE

Make/Model: Deutz TD2.9

Fuel type: Low sulfur diesel

Max engine rpm: 2,300 rpm

Gross horsepower: 60 hp (45 kW)

Aspiration: Turbocharged

Noise level at operator's ear: 86 dB(A)

Emissions rating: Tier 4i (EU Stage IIIA)

ENGINE OPTION TWO

Make/Model: Deutz TD2.9

Fuel type: Low sulfur diesel

Max engine rpm: 2,300 rpm

Gross horsepower: 60 hp (45 kW)

Aspiration: Turbocharged

Noise level at operator's ear: 86 dB(A)

Emissions rating: Tier 4 Final (EU Stage IV)

ENGINE OPTION THREE

Make/Model: Deutz TD2.9

Fuel type: Low sulfur diesel

Max engine rpm: 2,300 rpm

Gross horsepower: 60 hp (45 kW)

Aspiration: Turbocharged

Noise level at operator's ear: 87 dB(A)

Emissions rating: Tier 4 Final (EU Stage V)

OPERATIONAL

Thrust/Pullback: 10,000 lb (44.5 kN)

Max carriage speed at max engine rpm: 208 fpm (63.4 m/min)

Max spindle torque (low at max engine rpm): 1500 ft-lb (2033.7 Nm)

Max spindle speed at max engine rpm: 215 rpm

Min bore diameter: 2.5 in (6.4 cm)

Max ground drive speed at max engine rpm (fwd): 3.3 mph (5.3 km/h)

Drill rack angle: 14°–17° (24.9%–30.6%)

FLUID CAPACITIES

Fuel tank: 18 gal (68.1 L)

Hydraulic system: 25 gal (94.6 L)

DRILLING FLUID SYSTEM

Max flow: 20 gpm (75.7 L/min)

Max pressure: 1,000 psi (6.9 MPa)

FEATURES

Breakout system: Standard hydraulic vise

Flow indicator: Standard

Stakedown system: Standard

Strike alert: Standard

Remote lockout: Standard

DRILL PIPE

Type: 1.66 Firestick® drill rod #200

Length: 6 ft (1.8 m)

Rod diameter: 1.66 in (4.2 cm)

Weight: 26 lb (11.8 kg)

Bend radius: 95.5 ft (29.1 m)

Onboard capacity: 300 ft (91.4 m)

NOTES: