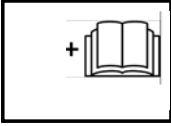


Visit Vermeer at [www.vermeer.com](http://www.vermeer.com) to locate your local Vermeer Tree Care dealer.

Your **rental associate** or technician **will explain** each of the following **operating steps and safety practices before you use** this brush chipper.



**WARNING:** Do not use or attempt to operate the machine until you understand proper operation and safety of the machine. Read the operator's manual. Read safety signs attached to the machine. In addition, a Vermeer Brush Chipper Operation and Safety Video is available for viewing at your rental center. If you are unsure of content or meaning of the safety messages or information regarding machine operation, ask your rental associate or technician for more details.

**INTENDED USE:** Vermeer BC600XL Brush Chippers are designed solely for use in chipping organic material such as wood, bark, limbs, brush, and undergrowth.

### OPERATING STEPS

#### 1. Brush Chipper Transport:

- Vehicle must have towing capacity of 2000 lb (907 kg), safety chain and highway lights connections.
- Fold and latch feed table. Rotate and lock discharge chute facing tow vehicle. Stow tongue jack.

#### 2. Brush Chipper Set Up:

- Set up machine in area free of obstacles. **NEVER** setup under a tree being pruned or removed.
- Always keep machine attached to tow vehicle and feed table set a minimum of 24" (61 cm) off the ground.
- Rotate and lock discharge chute to direct chips away from work area.
- Wear appropriate personal protective equipment.

#### 3. Brush Chipper Start:

- Disengage "*Belt Tightener*" and place "*Upper Feed Control Bar*" in center "STOP" position.
- Start engine and let it warm up.
- Engage "*Belt Tightener*" slowly to prevent stalling engine.
- Move "*Throttle*" to maximum engine speed.
- Pull "*Upper Feed Control Bar*" into "FORWARD" feed position and pull green "*Reset Lever*" on either side toward rear of machine. Feed roller will start rotating in "FORWARD" to pull material into brush chipper.

**Note:** When equipped with optional AutoFeed, feed roller will stop rotating when engine rpm drops below maximum speed and will automatically restart when engine speed returns to maximum rpm.

#### 4. Brush Chipper Feeding Tips:

- To reduce risk of being pulled into machine:
  - Feed from side of feed table, **NEVER** directly behind it.
  - Feed large end of log or branch into chipper first.
  - If wearing gloves, they must have narrow tight-fitting cuffs. **NEVER** wear gauntlet-style cuffed gloves.
  - Keep away from rotating feed roller. **NEVER** climb onto feed table.
  - Use wood object to push twigs or small short material into feed roller. **NEVER** push material with hands, feet, rake, shovel or other non-wood objects.
- To reduce risk of being struck by material, release limb immediately after it begins feeding, then turn away.

#### 5. Stopping Brush Chipper Feeding:

- Push "*Upper Feed Control Bar*" toward front of machine to center "STOP" position **or**, Pull "*Upper Feed Control Bar*" toward rear of machine to "E-Stop" position **or**, Push "*Lower Feed Stop Bar*" toward front of machine.

#### 6. Removing Plugged Material:

- If feed roller plugs or stalls, push "*Upper Control Bar*" to "REVERSE" feed position. Reposition or trim oversize material and re-feed into chipper.
- If cutter disc or discharge chute plugs, follow "*Shutdown Procedure*" outlined in attached operator's manual. Then follow instructions to unplug discharge chute.

#### 7. Restarting Stalled Machine:

- Place "*Upper Control Bar*" in center "STOP" position.
- Disengage "*Belt Tightener*," reduce engine "*Throttle*" to idle and restart engine.
- Increase engine speed to full rpm and use "*Upper Control Bar*," to reverse material out of feed roller.
- Reduce engine "*Throttle*" to idle, engage "*Belt Tightener*," increase engine speed to full rpm and resume feeding material.

#### 8. Shutdown Procedure:

- Place "*Upper Control Bar*" in center "STOP" position.
- Reduce engine "*Throttle*" to idle, disengage "*Belt Tightener*," turn engine off and remove key.
- Wait for cutter disc to stop. Check rear cutter housing bearing to ensure rotation has stopped.

**IMPORTANT:** Cutter disc will continue to rotate for a short time after engine has stopped.

Operator's manual and rental center guide are available in other languages. Contact [productsafety@vermeer.com](mailto:productsafety@vermeer.com). Se dispone del manual del operador y de la guía de centros de alquiler en otros idiomas. Póngase en contacto con [productsafety@vermeer.com](mailto:productsafety@vermeer.com).

## See other side for Safety Practices

Visit Vermeer at [www.vermeer.com](http://www.vermeer.com) to locate your local Vermeer Tree Care dealer.

Your **rental associate** or technician **will explain** to you each of the following **safety practices and operating steps** before you **use** this brush chipper.

**INTENDED USE:** Vermeer BC600XL Brush Chippers are designed solely for use in chipping organic material such as wood, bark, limbs, brush, and undergrowth.



### SAFETY PRACTICES

Below are selected safety messages. Additional safety information is contained in safety signs on the machine and in the Operator's Manual attached to the machine. A Vermeer Brush Chipper Operations and Safety Video is available for viewing at this rental center.



**WARNING:** Keep all spectators and unprotected workers away from the machine and work area while in operation.



**DANGER:** Limbs can snag clothing. Rollers or blades can grab and pull you in faster than you can let go of limb. Cutting injury or death will result.



- Feed material from the side of the feed table.



- Feed base of limb first.



- If you wear gloves, gloves must have narrow tight-fitting cuffs.



- Use wood object to push short material into feed roller.



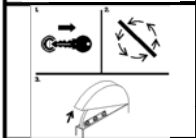
- Never climb onto feed table.



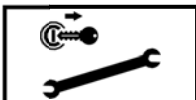
- Keep away from rotating feed roller and blades.



**DANGER:** Rotating knives in cutter housing can cut off hand. Thrown objects can strike you.



- Stop engine and wait for disc to stop.
- Then open cutter housing access cover.



**WARNING:** Use Shutdown Procedure explained in the operator's manual before servicing, cleaning, repairing or transporting the machine.



**WARNING:** Failure to follow any of the preceding safety instructions or those shown on the machine or in the operator's manual could result in serious injury or death. This machine is to be used for only those purposes for which it was intended as explained in the operator's manual.

## See other side for Operating Steps