



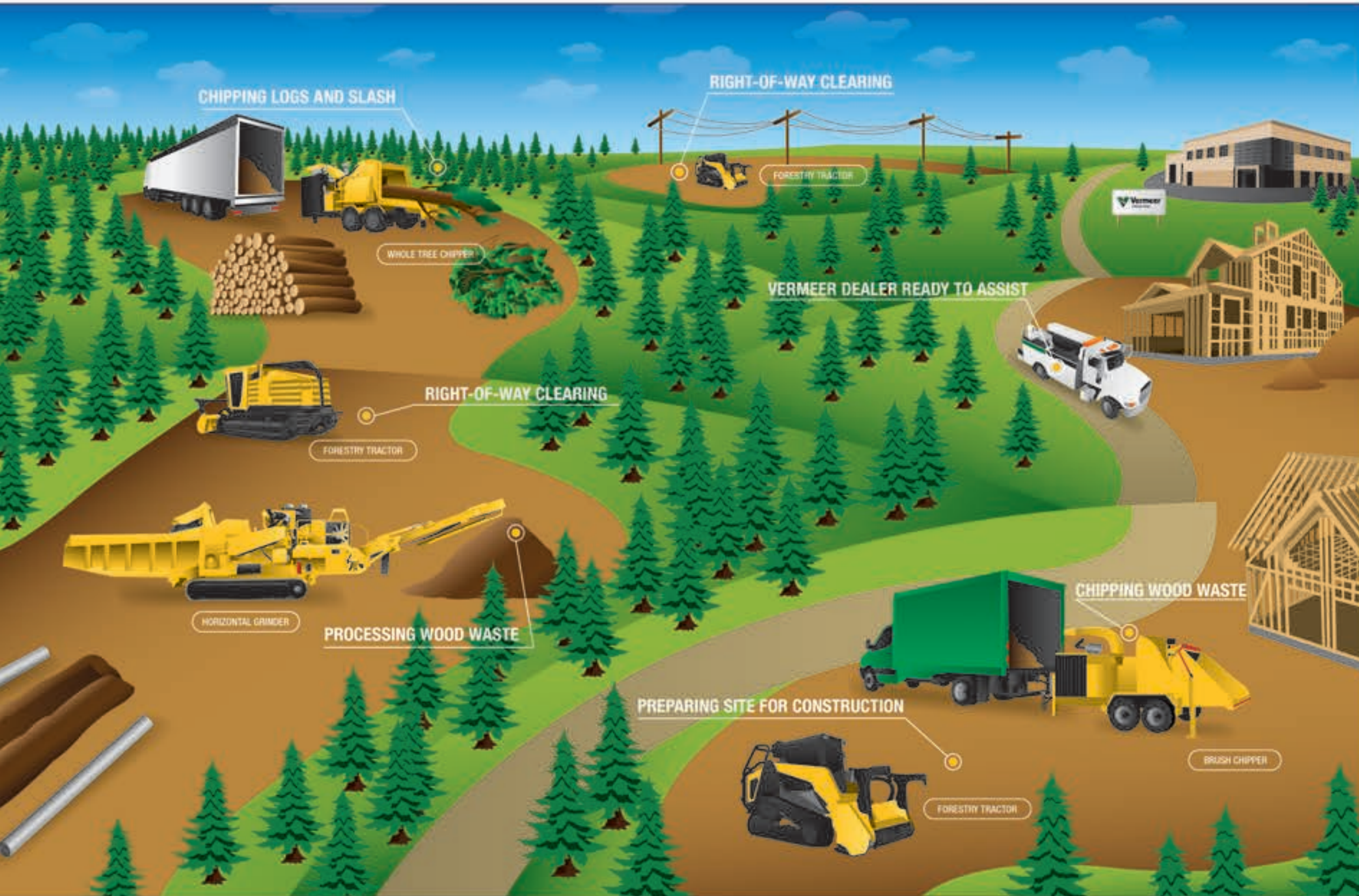
# FORESTRY MANAGEMENT

**Vermeer**



EQUIPPED TO  
DO MORE.™





# YOUR FORESTRY MANAGEMENT SOLUTIONS PROVIDER

Responsibly managing our natural resources presents many opportunities and challenges for forestry management professionals. Today's land-clearing contractors require equipment that can get the job done effectively and efficiently, while maintaining minimal disruption to the natural environment and keeping projects on schedule for the work that follows.

With a long history in environmental management, Vermeer understands the challenges you face and produces the equipment you need. Whether you are clearing the way for pipeline installation, seismic exploration or residential development; harvesting fuel crops; thinning forest for fire prevention or natural resource development – Vermeer can help you lead the way with our complete line of forestry products and a wide range of options and features that make the equipment work for you.

And with a regional and local dealer support network, you can rest assured Vermeer has an expert nearby, ready to support your forestry management project.

## TABLE OF CONTENTS

1	Your Forestry Management Solutions Provider	7	Horizontal Grinders
3	Forestry Tractors	9	Committed to Our Customers
5	Whole Tree Chipper and Brush Chippers		

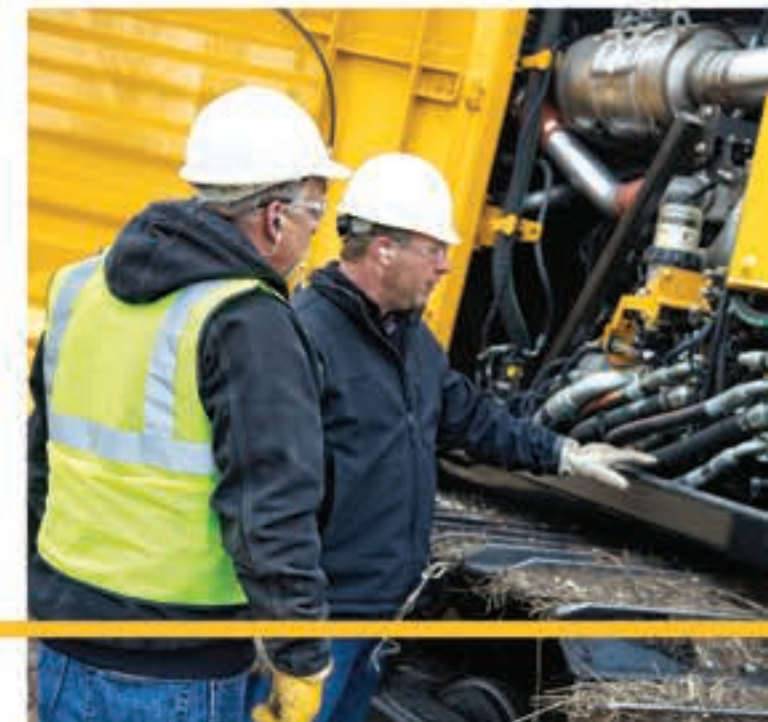


## THE CLEAR-CUT CHOICE

From forest thinning to right-of-way preparation or other land-clearing and maintenance projects, Vermeer forestry tractors offer a solution built with operator ease, reliability and serviceability top of mind. With the option of either the FT100 or the FT300, Vermeer has a machine for your land-clearing needs – with the reputation to stand behind it.

### THE VERMEER ADVANTAGE

- With an option of steel or low ground pressure tracks, the FT300 forestry tractor can meet your site conditions and needs.
- The mulcher head on both models features a ringed rotor that helps guide material into the cutting tips for a clean cutting path and consistent depth of cut.
- The optimized hydraulic system on the FT300 is designed to operate below its rated capacity for extended life of hydraulic components.







## MASTER YOUR MATERIAL

Your clearing and logging operations create wood waste, and Vermeer supplies the equipment to help you turn that into a valuable end product. The Vermeer whole tree chipper is designed to chip logs and slash, or your dedicated fuel crop, producing wood chips that can be sold. Vermeer also offers brush chippers to provide more options to meet your site needs.

### THE VERMEER ADVANTAGE

#### WHOLE TREE CHIPPER

- With multiple knife options, one machine can provide different chip sizes to meet end-use requirements.
- A skidder grab allows the whole tree chipper to be moved around the jobsite.
- The drum and discharge chute are designed with bolt-in replaceable wear parts to help extend machine life and make maintenance more convenient.

#### BRUSH CHIPPERS

- The SmartFeed feed-sensing control enhances productivity by stopping and reversing the feed roller to optimally process large, hardwood material.
- The Ecoldle™ engine control system\* saves fuel and reduces noise by automatically reducing engine rpm after one or five minutes of inactivity.
- Select models are available with a remote control, conveniently enabling operation from a loader while still maintaining control of the chipper.

\* Ecoldle system is not available in all territories. For more information contact your local dealer.



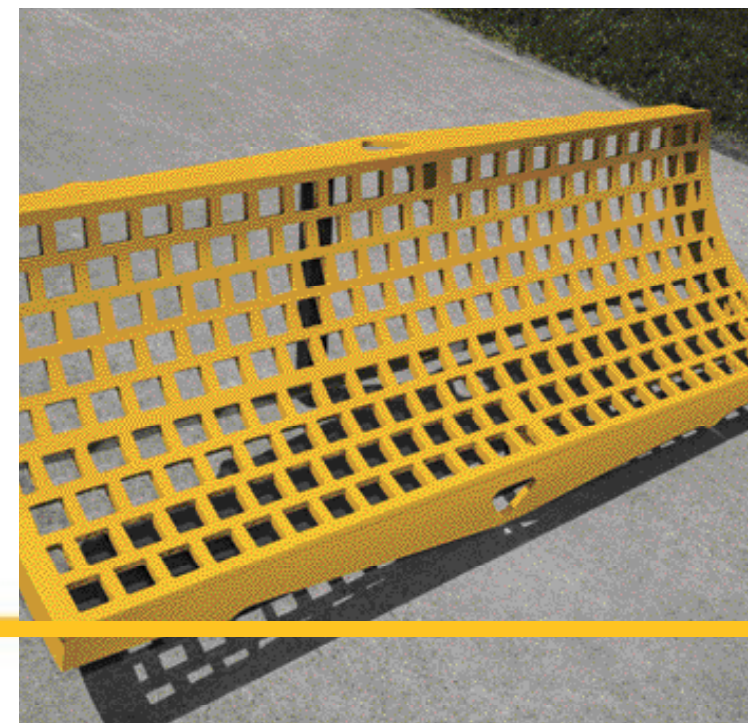
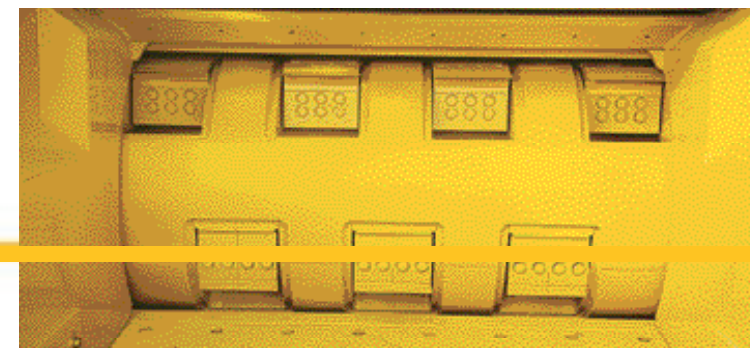


## PROGRESSIVE PROCESSING

On your remote jobsites, you need equipment that is productive, reliable and versatile. For more than a decade, Vermeer has led the wood waste processing industry with horizontal grinders that are built tough and offer the features you need to meet your end-use product requirements. Our horizontal grinder lineup is built to efficiently and effectively process logs and other woody material into a useful end product.

### THE VERMEER ADVANTAGE

- A patented duplex drum design features reversible hammers and cutter tips that help simplify maintenance and can nearly double wear life. The optional chip drum on select models offers the flexibility to produce a uniform chipped end product.
- A variety of screen choices can be mixed and matched to help you maximize productivity while meeting end-product specifications.
- Track-driven grinders provide mobility on remote site locations, and a dolly transport system (available on select models) allows a track-driven grinder to be transported between sites without a separate trailer.





## COMMITTED TO OUR CUSTOMERS

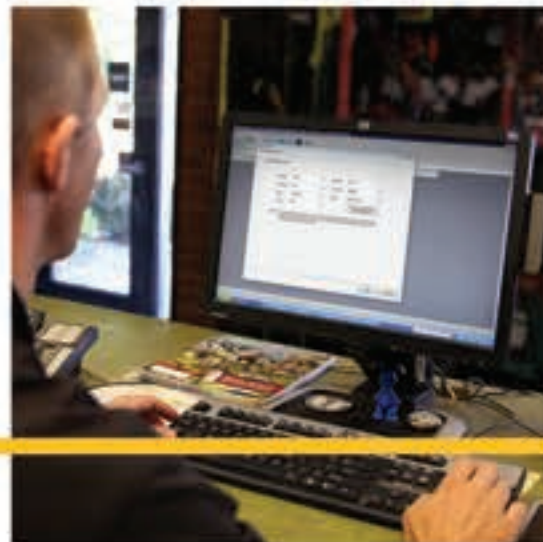
When it's on the line, you require a partner who can provide the support and technology solutions to help keep your job productive. Vermeer is ready to stand behind your next project – no matter where it takes you – with local expertise and dealer support.

### THE VERMEER ADVANTAGE

- Let InSite® asset management (available on select models) help you make key decisions on your Vermeer fleet of equipment.
- With customer support and protection tools such as Vermeer Confidence Plus® asset protection program (available on select models), safeguarding your operation and protecting your equipment assets has never been easier.
- Our parts support team is dedicated to your jobsite success, and prides themselves on the ability to deliver technical assistance and spare parts quickly.



Your personalized equipment and support plan awaits.



**Vermeer**



**EQUIPPED TO  
DO MORE.™**

Equipment and jobsites shown are for illustrative purposes only and may display optional accessories or components or may not be to scale. Please contact your local Vermeer dealer for more information on machine specifications.

Vermeer Corporation reserves the right to make changes in engineering, design and specifications; add improvements; or discontinue manufacturing at any time without notice or obligation.

Vermeer, the Vermeer logo, Equipped to Do More, EcoDixie, InSite and Vermeer Confidence Plus are trademarks of Vermeer Manufacturing Company in the U.S. and/or other countries.  
© 2015 Vermeer Corporation. All Rights Reserved.