

A large VermeerOne platform tub grinder is shown in operation on a construction site. The machine is a heavy-duty, multi-axle vehicle with a large rotating drum and a discharge chute. It is processing a large pile of debris, with a significant amount of dust and material being thrown into the air. The background shows a cloudy sky and a distant city skyline. The overall scene is in black and white, with a yellow diagonal stripe running across the bottom right corner.

VermeerOne™ platform

MEET YOUR FLEET

TUB GRINDERS



VermeerOneTM is your access to more.

Because it's more than a platform, it's all a part of the total experience you get when you're with Vermeer. More certainty in your operation, more connection to the details, more confidence to increase your productivity and more important work, done. All of it adding up to give you more time for the big things like closing that next big deal, getting home in time for dinner or making it to the school program before the curtain opens. Experience more with VermeerOne platform — it's your connection point to Vermeer no matter where work or life takes you.

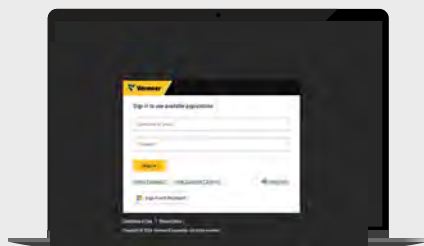
THAT MEANS

MORE

**CERTAINTY, CONNECTION, CONFIDENCE AND
TIME FOR THE BIG THINGS.**

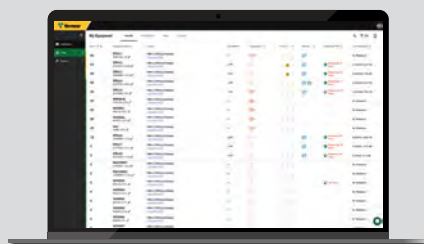
VermeerOne

YOUR ACCESS TO MORE STARTS HERE.



1. LOGIN

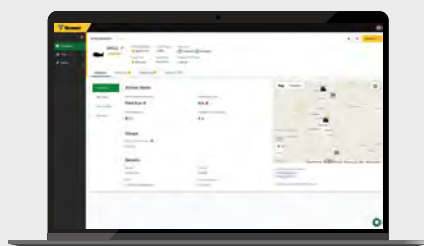
Go to one.vermeer.com and log in using the username or email and password associated with your Vermeer account.



2. FLEET

On the homepage, select Fleet to access your list of equipment. Information that you will find:

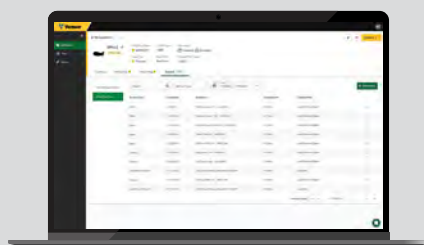
- List of equipment
- Machine health overview
- Filters to apply to narrow your machine list



3. EQUIPMENT DETAILS

Information you will find:

- Machine location
- Dealership contact information
- Machine operating parameters



4. SERVICE RECORDS AND MAINTENANCE

Information you will find:

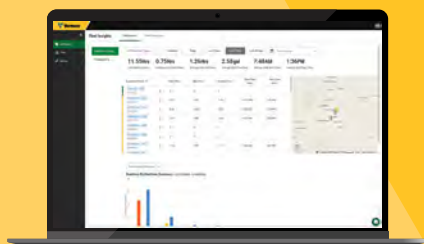
- Complete service history log
- VIN-specific information such as registrations and owner manuals
- Warranty status, hours and machine software



5. NOTIFICATIONS

Information you will find:

- Critical issue alerts such as service needs
- Action items such as operational anomalies or security concerns



PREMIUM

Information you will find:

- Aggregated performance data and insights
- Geofence alerts and curfew
- Fleet-level reporting

TUB GRINDERS

To access machine information log on to one.vermeer.com with the username or email and password associated with your Vermeer account. Contact your Vermeer dealer for questions and details about fleet technology data services.

	TG5000	TG5000E	TG7000
GPS LOCATION			
Location history	★	★	★
Wake on movement	■	■	■
Current location	■	■	■
MACHINE HOURS			
Work hours	★	★	★
Idle hours	★	★	★
Total hours	■	■	■
MACHINE HEALTH			
Fault codes	■	■	■
Maintenance intervals	■	■	■
EFFICIENCY			
Working fuel usage	★		★
Idling fuel usage	★		★
Total fuel usage	★		★

■ STANDARD COMPLEMENTARY FEATURES. ★ PREMIUM FEATURES CONTACT YOUR DEALER FOR PREMIUM INFORMATION, INCLUDING ACCESS AND FEES. ● OPTIONAL WITH AVAILABLE HARDWARE.