

PTX44 PLOW/TRENCHER



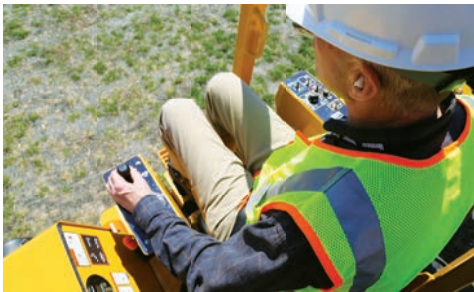
MAXIMUM PRODUCTIVITY. The dedicated plow has a maximum installation depth of 24 in (61 cm), while the optional trencher attachment has a maximum trenching depth of 42 in (106.7 cm) and width of 6 in (15.2 cm).



ARTICULATED DESIGN. The center-articulated PTX44 oscillates at the point of articulation, providing unmatched performance on uneven terrain.



IN CONTROL. Conveniently placed, fingertip controls minimize operator reach and help maintain operator comfort when performing lengthy fiber-to-the-home, service, gas and electric installations.



PRECISE HANDLING. The PTX44 utilizes electronic controls, providing operators more precise handling and fingertip control.



JOBSITE VISIBILITY. The operator's station is located at the center of the service plow directly above the machine's articulation point, which provides excellent visibility of the entire work area.



SERVICEABILITY. Access to hydraulic, engine oil and air filters does not require removal of any shielding, which makes machine service and preventive maintenance more efficient.

PTX44 PLOW/TRENCHER

GENERAL DIMENSIONS AND WEIGHTS

Weight [basic tractor, 26 in (66 cm) tire]: 2940 lb (1333.6 kg)

Weight [basic tractor, 23 in (58.4 cm) dual tire]: 3188 lb (1446.1 kg)

Weight (basic tractor, tracks): 3840 lb (1741.7 kg)

Length (basic tractor, tire): 84.8 in (215.4 cm)

Length (basic tractor, tracks): 92.8 in (235.7 cm)

Width [basic tractor, 26 in (66 cm) tire]: 48 in (121.9 cm)

Width [basic tractor, 23 in (58.4 cm) dual tire]: 60 in (152.4 cm)

Width (basic tractor, tracks): 44.5 in (113 cm)

Height [basic tractor, 26 in (66 cm) tire]: 89.5 in (227.3 cm)

Height [basic tractor, 23 in (58.4 cm) dual tire]: 88 in (223.5 cm)

Height (basic tractor, tracks): 88.5 in (224.7 cm)

Rollover protection structure (2-post ROPS): 6500 lb (2948.4 kg)

Tread width [basic tractor, 26 in (66 cm) tire]: 36 in (91.4 cm)

Tread width [basic tractor, 23 in (58.4 cm) dual tire]: 39 in (99.1 cm)

Tread width (basic tractor, tracks): 32.3 in (82 cm)

Ground clearance [basic tractor, 26 in (66 cm) tire]: 7.9 in (20 cm)

Ground clearance [basic tractor, 23 in (58.4 cm) dual tire]: 6.4 in (16.3 cm)

Ground clearance (basic tractor, tracks): 6.9 in (17.4 cm)

Wheel base (centerline of axles): 48 in (121.9 cm)

ENGINE

Make and model: Kubota WG1605

Manufacturer's gross hp rating: 46.8 hp (34.9 kW)

Max torque: 88.7 ft-lb (120.3 Nm)

Cooling medium: Liquid Cooled

Fuel type: Unleaded gas

Emissions rating: EPA Phase 3 and CARB LSI

CAPACITIES

Fuel tank: 12 gal (45.4 L)

Hydraulic tank: 9 gal (34.1 L)

Hydraulic system: 11 gal (41.6 L)

Coolant: 1.25 gal (4.7 L)

GROUND DRIVE - RUBBER TIRE OPTION ONE

Max transport speed (fwd/rev): 2.7 mph (4.3 km/h)

Max creep speed (fwd/rev): 143 fpm (43.6 m/min)

Tire size: 26 in x 12 in (66 cm x 30.5 cm)

GROUND DRIVE - RUBBER TIRE OPTION TWO

Max transport speed (fwd/rev): 2.4 mph (3.9 km/h)

Max creep speed (fwd/rev): 127 fpm (38.7 m/min)

Tire size: 23 in x 10.5 in (58.4 cm x 26.7 cm) duals

GROUND DRIVE - TRACKS

Max transport speed (fwd/rev): 2.4 mph (3.9 km/h)

Max creep speed (fwd/rev): 127 fpm (38.7 m/min)

Track width: 11 in (27.4 cm)

AXLE OPTIONS

Axle type: Planetary

Outside turning diameter [26 in (66 cm) tire]: 19 ft (5.8 m)

Outside turning diameter [23 in (58.4 cm) tire]: 20 ft (6.1 m)

Outside turning diameter (tracks): 18.8 ft (5.7 m)

Service brake type: Hydrostatic

Parking brake type: Drum

NOTES:

Vermeer Corporation reserves the right to make changes in engineering, design and specifications; add improvements; or discontinue manufacturing at any time without notice or obligation. Equipment shown is for illustrative purposes only and may display optional accessories or components. Please contact your local Vermeer dealer for more information on machine specifications. Vermeer, the Vermeer logo and Equipped to Do More are trademarks of Vermeer Manufacturing Company in the U.S. and/or other countries. © 2023 Vermeer Corporation. All Rights Reserved. Printed in the U.S.A. Please recycle.

