

TR626

TROMMEL SCREEN



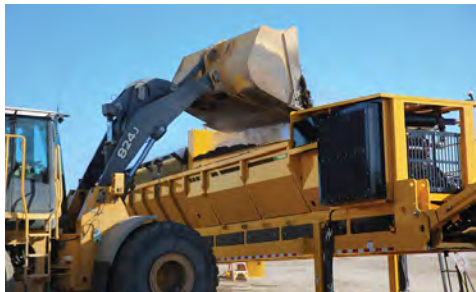
QUICK CHANGE SCREENS. Quicker and simpler screen changes can help improve jobsite efficiency, a particularly important feature when processing a range of materials that requires frequent screen changes.



HIGH PRODUCTION. The tensioned screens around the drum add rigidity, allowing use of smaller-gauge wire — which helps increase production capacity and enable processing of wetter material.



STAINLESS STEEL SCREEN OPTION. Stainless steel screens offer increased durability and help reduce the amount of screen blinding when working with wet or corrosive materials.



CONVENIENT LOADING. Large, low-feed hoppers are easier to load without the need for loading ramps.



ADVANCED CONTROLS. Operators can control the machine through either the Vermeer DP10 display mounted on the control panel, or through a handheld transceiver remote.



RADIAL STACKING CONVEYOR. Simple stacking conveyor with 180° arc increases the amount of material being stacked on the ground. Adjustable stacking height aids with dust control and helps avoid material being blown away.

TR626 TROMMEL SCREEN

GENERAL DIMENSIONS

- Max transport length: 54.5 ft (16.6 m)
- Max transport width: 113 in (287 cm)
- Max transport height: 13.5 ft (4.1 m)
- Max operational length: 84.4 ft (25.7 m)
- Max operational width: 113 in (287 cm)
- Max operational height: 15.9 ft (4.8 m)
- Weight: 49,700 lb (22,543.5 kg)
- Capacity: Approximately 200 yd³ (152.9 m³) per hour with 0.5 in (12.7 mm) screens installed and material with moisture less than 40%

ENGINE

- Make and model: John Deere PowerTech PVX 4.5L, Tier 4F
- Engine rating: 134 hp (100 kW) @ 2,400 rpm, 364 ft-lb (481.3 Nm) of torque @ 1,500 rpm
- Fuel tank capacity: 73 gal (276.3 L)

HOPPER AND APRON CONVEYOR

- Hopper capacity: 6 yd³ (4.6 m³)
- Hopper height: 9.5 ft (2.9 m) from ground level at operating incline
- Apron conveyor rollers: 4 in (10.2 cm) diameter, 14 qty

SCREEN DRUM

- Drum diameter: 6 ft (1.8 m)
- Drum length: 26 ft (7.9 m)
- Max screen panels: 8

FINES CONVEYOR

- Conveyor belt width: 36 in (91.4 cm)
- Conveyor belt stacking height: 16.6 ft (5.1 m) with drum at 4°

OVERS CONVEYOR

- Max variable overs belt speed: 290 fpm (88.4 m/min)
- Conveyor belt size: 48 in (121.9 cm) wide with raised crescent
- Conveyor belt stacking height: 3 ft x 10 ft (.9 m x 3 m)

STACKING CONVEYOR

- Conveyor belt width: 30 in (76.2 cm)
- Conveyor belt stacking height: 16.6 ft (5 m)/5.5 ft (1.7 m) minimum with drum at 5°
- Rotation: 180°
- Fines belt speed: 640 fpm (195.1 m/min)

OPTIONS

- Vermeer Confidence Plus® asset protection program
- Remote controlled grizzly
- Vibrating livehead over hopper
- Auxiliary hydraulic circuit
- Dual row drum brushes
- Drum cover
- Magnetic head pulley

NOTES: