

D40x55DR S3 NAVIGATOR®

HORIZONTAL DIRECTIONAL DRILL



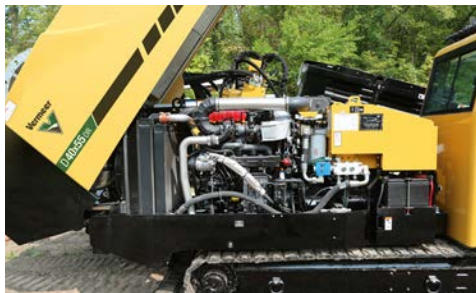
BUILDING ON GREATNESS. Incorporating dependability and performance of the D40x55 S3 Navigator® horizontal directional drill with the latest advancements in dual rod technology create a familiar operator experience that will outperform many other rock drilling solutions.



REDUCED STEPS. The time and steps required to add or remove a rod on the D40x55DR S3 is significantly less than previous Vermeer models due to an enhanced dual drill rod design that quickly and easily makes up the inner and outer rod connections.



ADDED COMFORT. Install with added comfort of climate control, weatherproofing and reduced noise levels of 80 dBA at the operator's ear in a standard operator's cab.



IMPRESSIVE POWER. Powered by a 140 hp (104 kW) John Deere diesel engine, this drill serves up 40,000 lb (177.9 kN) of thrust/pullback and 5,500 ft-lb (7,457 Nm) of rotational torque.



MORE FEET ONBOARD. Install more feet and save time with an impressive 500' (152.4 m) of drill rod on-board.



LESS RESTRICTIONS. A hollow inner rod design results in more air and drilling fluid flow to the drill head on pilot bores and the hole opener during pullback, providing contractors the ability to select from a more diverse range of tooling options, including air hammers and larger hole openers.



VERMEER.COM



EQUIPPED TO
DO MORE.®

D40x55DR S3 NAVIGATOR® HORIZONTAL DIRECTIONAL DRILL

GENERAL WEIGHTS AND DIMENSIONS

Min transport length: 264" (670.6 cm)

Max operational length: 296" (752 cm)

Min transport width: 89" (226 cm)

Max operational width: 120" (305 cm)

Min transport height: 110" (279 cm)

Max operational height: 126" (320 cm)

Max weight: 31500 lb (14288 kg)

Angle of approach: 23 deg

Angle of departure: 19 deg

ENGINE OPTION ONE

Make and model: John Deere

Fuel type: Diesel

Max engine rpm: 2400 rpm

Gross horsepower: 140 hp (104 kW)

Aspiration at full engine load: Turbocharged

Max fuel consumption: 7.56 gph (28.6 lph)

Emissions rating: Tier 4 Final (EU Stage IV)

Max operating angle (fore/aft): 30 continuous/45 intermittent

Max operating angle (left/right): 30 continuous/45 intermittent

ENGINE OPTION TWO

Make and model: John Deere

Fuel type: Diesel

Max engine rpm: 2400 rpm

Gross horsepower: 140 hp (104 kW)

Aspiration at full engine load: Turbocharged

Max fuel consumption: 7.56 gph (28.6 lph)

Emissions rating: Tier 3 (EU Stage IIIA)

Max operating angle (fore/aft): 30 continuous/45 intermittent

Max operating angle (left/right): 30 continuous/45 intermittent

FLUID CAPACITIES

Fuel tank: 45 gal (170.1 L)

Hydraulic system: 65 gal (245.7 L)

DRILLING FLUID SYSTEM ONE

Max flow: 70 gpm (264.6 lpm)

Max pressure: 900 psi (60.2 bar)

DRILL PIPE - DUAL

Min bend radius: 169' (52 m)

Rod carrying capacity: 500' (152 m)

Length: 10' (3 m)

Drill rod (inner): Forged, hex connection

Drill rod (inner) - joint diameter: 1.88" (4.8 cm)

Drill rod (inner) - pipe diameter: 1.66" (4.2 cm)

Drill rod (inner) - weight: 40 lb (18.2 kg)

Drill rod (inner) - joint inside diameter: .75" (1.9 cm)

Drill rod (outer): Firestick - #750

Drill rod (outer) - joint diameter: 3.31" (8.4 cm)

Drill rod (outer) - pipe diameter: 2.63" (6.7 cm)

Drill rod (outer) - weight: 86 lb (39 kg)

Drill rod (outer) - joint inside diameter: 2.06" (5.2 cm)

FEATURES

Breakout system: Sliding, open top vise

Drilling lights: Standard

Flow indicator: Mud flow indicator

Stakedown system: Standard aggressive

Cab: Standard

Strike alert: Standard

Remote lockout: Standard

OPERATIONAL

Thrust rod: 40,000 lb (177.9 kN)

Pullback rod: 40,000 lb (177.9 kN)

Max carriage speed at max engine rpm - fpm (m/min): 115 fpm (35.1 m/min)

Max spindle torque (max engine rpm) - ft-lb (Nm): 5500 ft-lb (7458 Nm)

Max spindle speed at max engine rpm - (rpm): 199 rpm

Min bore diameter: 6.25" (15.9 cm)

Max ground drive speed at max engine rpm - mph: 2.7 mph (4.3 km/h)

Noise level at operator's ear: 80 dB(A)

Guaranteed sound power engine: 104 dB(A)

Vermeer Corporation reserves the right to make changes in engineering, design and specifications; add improvements; or discontinue manufacturing at any time without notice or obligation.

Equipment shown is for illustrative purposes only and may display optional accessories or components. Please contact your local Vermeer dealer for more information on machine specifications.

Vermeer, the Vermeer logo, Equipped to Do More, InSite, Firestick and Navigator are trademarks of Vermeer Manufacturing Company in the U.S. and/or other countries. Aurora and DigiTrak are trademarks of Digital Control Inc. © 2020 Vermeer Corporation. All Rights Reserved. Printed in the U.S.A. Please recycle.

Vermeer



EQUIPPED TO
DO MORE.