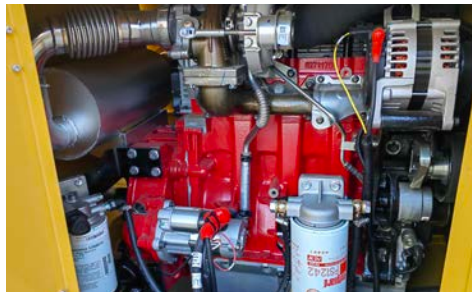


# BC1000SV BRUSH CHIPPER



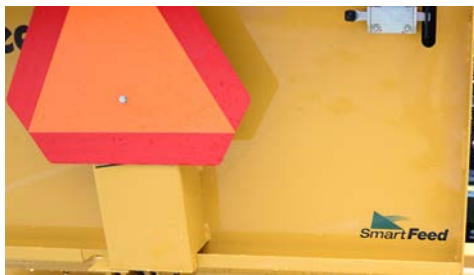
**CLUTCHLESS PTO.** The throttle integrated with the belt drive engagement process allows the PTO to only be engaged while the engine is at low/idle rpm.



**72-HP (54-KW) EFI ENGINE.** Performs well during cold-weather starts, minimizes occurrence of engine flooding and provides improved fuel economy over comparable carbureted diesel engines.



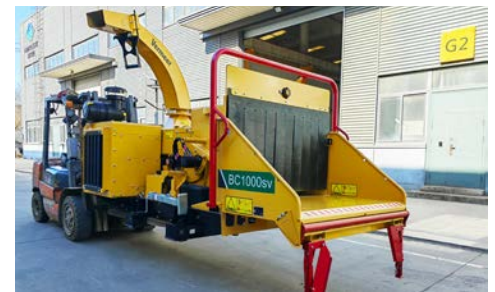
**LARGE INFEEED OPENING.** 12 in x 17 in (30.5 cm x 43.2 cm) maximizes the efficiency of irregular material feeding and reduces the need to trim material before feeding it into the chipper.



**EXCLUSIVE SMARTFEED CONTROL SYSTEM.** Helps operator productivity and reduces strain on vital engine parts, as engine rpm is monitored and feed rollers are controlled.



**BUILT WITH OPERATOR SAFETY IN MIND.** Through the patented bottom feed stop bar, which is strategically located along the bottom of the feed table. The system makes it possible for an operator to strike the bar and shut off the feed mechanism.



**CONVENIENT TRANSPORTATION.** Can be mounted on a vehicle to facilitate the transportation of equipment, thus overcoming certain local road regulation restrictions.

# BC1000SV BRUSH CHIPPER

## GENERAL

Length (feed table up, tongue in): 116 in (295 cm)

Length (feed table down, tongue extended): 138 in (351 cm)

Width: 67 in (170 cm)

Height: 91 in (230 cm)

Weight: 4,762 lb (2,160 kg)

## ENGINE

Make and model: Cummins QSF2.8 Turbo

Number of cylinders: 4

Gross horsepower (maximum): 72 hp (54 kW)

Torque (maximum): 184 ft-lb (250 Nm)

Fuel tank capacity: 25 gal (94.6 L)

Fuel type: Diesel

## FEED SYSTEM

Feed roller orientation: Single horizontal

Feed roller dimension: 20 in x 17 in (50.8 cm x 43.2 cm)

Feed speed: 105 fpm (32 m/min)

Infeed table width: 52 in (132.1 cm)

Infeed table length: 32 in (81.3 cm)

Infeed throat capacity: 12 in x 17 in (30.5 cm x 43.2 cm)

## SAFETY SYSTEM

Bottom feed stop bar: Standard

Reset method: Dual green hold-to-run buttons

Positions: Four positions – E-stop, forward, stop and reverse

## CUTTING SYSTEM

Material capacity: 12 in (30.5 cm)

Width: 20 in (50.8 cm)

Diameter: 22 in (56 cm)

Speed: 2,264 rpm

Number of knives: 2 or 4 knife option

Usable edges: 2

## DISCHARGE SYSTEM

Chute height: 91 in (230 cm)

Chute rotation angle: 270°

Rotation type: Manual

## ELECTRICAL SYSTEM

System voltage: 12

Battery: 31-950T, 850 CCA

Switches: Hold-to-run, sensitivity selector

## HYDRAULIC SYSTEM

Tank capacity: 7 gal (26.5 L)

