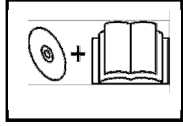




Visit Vermeer at www.vermeer.com to locate your local Vermeer Dealer.

Your **rental associate** or technician **will explain** each of the following **operating steps and safety practices before you use** this brush chipper.



WARNING: Do not use or attempt to operate the machine until you understand proper operation and safety of the machine. Read the operator's manual. Read safety signs attached to the machine. In addition, a Vermeer Brush Chipper Operation and Safety Video is available for viewing at your rental center. If you are unsure of content or meaning of the safety messages or information regarding machine operation, ask your rental associate or technician for more details.

INTENDED USE: Vermeer BC230xL Brush Chippers are designed solely for use in chipping organic material such as wood, bark, limbs, brush and undergrowth.

OPERATING STEPS

1. Brush Chipper Transport:

- Vehicle must have towing capacity of 1973 kg (2141 lb), connections for breakaway tongue cable and highway lights.
- Fold up and latch feed table. Rotate and lock discharge chute facing tow vehicle. Stow front and rear jacks, release park brake.
- If equipped with optional turntable, rotate and lock feed table straight behind machine.

2. Brush Chipper Setup:

- Set up machine in area free of obstacles. **NEVER** set up under a tree being pruned or removed.
- Keep machine attached to tow vehicle **OR** set park brake, install both jacks and place wheel chokes on rear side of both tires.
- Ensure feed table height is a minimum of 61 cm (24") off the ground. Wear appropriate personal protective equipment.
- Rotate and lock discharge chute to direct chips away from work area. If equipped with optional turntable, rotate feed table to side and lock.

3. Brush Chipper Start:

- Disengage "Cutter Disc" and place "Upper Feed Control Bar" in center "STOP" position.
- Start engine and let it warm up.
- Engage "Cutter Disc" slowly to prevent stalling engine.
- Move "Throttle" to maximum engine speed.
- Pull "Upper Feed Control Bar" into "FORWARD" feed position and push "Reset/Hold-to-run" button on either side toward rear of machine. Feed rollers will start rotating in "FORWARD" to pull material into brush chipper.
Note: When engine speed drops below selected RPM because of heavy chipping, SmartFeed will momentarily reverse and stop the feed rollers. The feed rollers will automatically restart when engine speed returns to maximum RPM.

4. Brush Chipper Feeding Tips:

- To reduce risk of being pulled into machine:
 - Feed from side of feed table, **NEVER** directly behind it. Feed large end of log or branch into chipper first.
 - If wearing gloves, they must have narrow tight-fitting cuffs. **NEVER** wear gauntlet-style cuffed gloves.
 - Keep away from rotating feed rollers. **NEVER** climb onto feed table.
 - Use wood object to push twigs or small short material into feed rollers. **NEVER** push material with hands, feet, rake, shovel or other non-wood objects.
- To reduce risk of being struck by material, release limb immediately after it begins feeding, then turn away.

5. Stopping Brush Chipper Feeding:

- Push "Upper Feed Control Bar" toward front of machine to center "STOP" position **or**, Pull "Upper Feed Control Bar" toward rear of machine to "E-Stop" position **or**, Push "Lower Feed Stop Bar" or "Side Feed Stop Bar" toward front of machine.

6. Removing Plugged Material:

- If feed rollers plug or stall, push "Upper Control Bar" to "REVERSE" feed position. Reposition or trim oversize material and re-feed into chipper.
- If cutter disc or discharge chute plugs, follow "Shutdown Procedure" outlined in attached operator's manual. Then follow instructions to unplug disc or discharge chute.

7. Restarting Stalled Machine:

- Place "Upper Control Bar" in center "STOP" position.
- Disengage "Cutter Disc," reduce engine "Throttle" to idle and restart engine.
- Increase engine speed to full rpm and use "Upper Control Bar" to reverse material out of feed rollers.
- Reduce engine "Throttle" to idle, engage "Cutter Disc," increase engine speed to full rpm and resume feeding material.

8. Shutdown Procedure:

- Place "Upper Control Bar" in center "STOP" position.
- Reduce engine "Throttle" to idle, disengage "Cutter Disc," turn engine off and remove key.
- Wait for cutter disc to stop. Check front cutter housing slots to ensure disc rotation has stopped.

IMPORTANT: Cutter disc will continue to rotate for a short time after engine has stopped.

Operator's manual and rental center guide are available in other languages. Contact productsafety@vermeer.com. Se dispone del manual del operador y de la guía de centros de alquiler en otros idiomas. Póngase en contacto con productsafety@vermeer.com.

See other side for Safety Practices



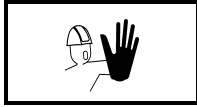
Visit Vermeer at www.vermeer.com to locate your local Vermeer Dealer.

Your **rental associate** or technician **will explain** to you each of the following **safety practices and operating steps** before you use this brush chipper.



SAFETY PRACTICES

Below are selected safety messages. Additional safety information is contained in safety signs on the machine and in the operator's manual attached to the machine. A Vermeer Brush Chipper Operations and Safety Video is available for viewing at this rental center.



WARNING: Keep all spectators and unprotected workers away from the machine and work area while in operation.



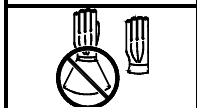
DANGER: Limbs can snag clothing. Rollers or blades can grab and pull you in faster than you can let go of limb. Cutting injury or death will result.



- Feed material from the side of the feed table.



- Feed base of limb first.



- If you wear gloves, gloves must have narrow, tight-fitting cuffs.



- Use wood object to push short material into feed rollers.



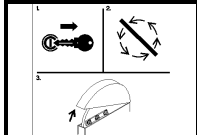
- Never climb onto feed table.



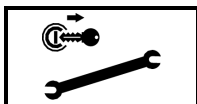
- Keep away from rotating feed rollers and blades.



DANGER: Rotating knives in cutter housing can cut off hand. Thrown objects can strike you.



- Stop engine and wait for disc to stop.
- Then open cutter housing access cover.



WARNING: Use Shutdown Procedure explained in the operator's manual before servicing, cleaning, repairing or transporting the machine.



WARNING: Failure to follow any of the preceding safety instructions or those shown on the machine or in the operator's manual could result in serious injury or death. This machine is to be used for only those purposes for which it was intended as explained in the operator's manual.

See other side for Operating Steps