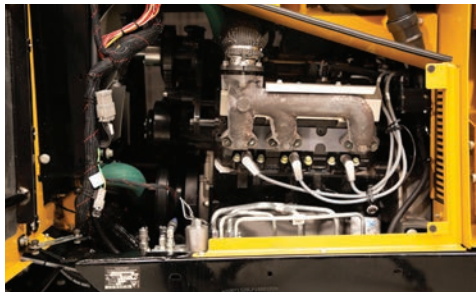


SC1052 STUMP CUTTER



MORE POWER. The 115-hp (86-kW) gas engine provides high productivity and speed, resulting in maximum cutting power and minimal maintenance needs, to help you complete more jobs in a day.



4-BAR LINKAGE. Maximize cutting width through a unique 4-bar linkage that moves the cutter wheel away from the machine as the boom drops. This helps the cutter wheel grind the stump at all maximum dimensions.



VERMEER CUTTING SYSTEM. The Vermeer cutting system features a patented design that solves several challenges associated with traditional cutting systems, including double-sided teeth with no pockets that need replaced, a V-profile, center core protection, minimized recirculation and ease of maintenance.



SMART TECHNOLOGY. Experience exclusive stump-cutting technology that maximizes your machine at the stump, such as SmartSweep™ control system, and the operator presence system.



ALL-TERRAIN. With power and torque transferred to each of the four wheels, the SC1052 is able to traverse difficult and uneven ground conditions, with minimal ground disturbance. With the differential locks disengaged, maneuverability is enhanced. In difficult ground conditions, the operator can engage the differential locks to maintain pulling power during uneven wheel traction conditions.



MAXIMUM CUTTING, MAXIMUM CONTAINMENT. Class-leading cutting dimensions enable you to cut up to a 6-ft (2-m) stump without repositioning the machine. Plus, an intelligent chip flow design allows you to focus on the cutting, not the cleaning.

SC1052 STUMP CUTTER

GENERAL DIMENSIONS AND WEIGHTS

Length: 12.7 ft (3.9 m)

Width: 35 in (89 cm)

Height: 80 in (203.2 cm)

Overall width transport (with duals): 56 in (142.2 cm)

Weight (engine option one): 4,460 lb (2,023 kg)

Make and model: Origin 4X

Max gross horsepower: 115 hp (85.8 kW)

Max torque: 231 ft-lb (313 Nm)

Fuel tank capacity: 18 gal (68.1 L)

Fuel type: Gas

HYDRAULIC SYSTEM

Tank capacity: 18.4 gal (69.6 L)

CUTTERWHEEL SYSTEM

Cutterwheel diameter without teeth: 26 in (66 cm)

Cutterwheel straight line dimension 72 in (182.9 cm)

Cutterwheel cut above ground: 31 in (78.7 cm)

Cutterwheel cut below ground: 25 in (63.5 cm)

Tooth description: Vermeer cutting system

Number of teeth: 33

Chip containment: 28.2 ft³ (.8 m³)

REMOTE CONTROL OPTION

Radio remote control: Optional

Remote functions: Engine start/stop, throttle, cutter wheel engage, swing, raise/lower

Remote display: LED

Remote range: 300 ft (91.4 m)

NOTES:

Vermeer Corporation reserves the right to make changes in engineering, design and specifications; add improvements; or discontinue manufacturing at any time without notice or obligation. Equipment shown is for illustrative purposes only and may display optional accessories or components specific to their global region. Please contact your local Vermeer dealer for more information on machine specifications. Vermeer, the Vermeer logo, Equipped to Do More and SmartSweep are trademarks of Vermeer Manufacturing Company in the U.S. and/or other countries. Origin is a trademark of Origin Engines, Inc. © 2022 Vermeer Corporation. All Rights Reserved. Printed in the U.S.A. Please recycle.

