

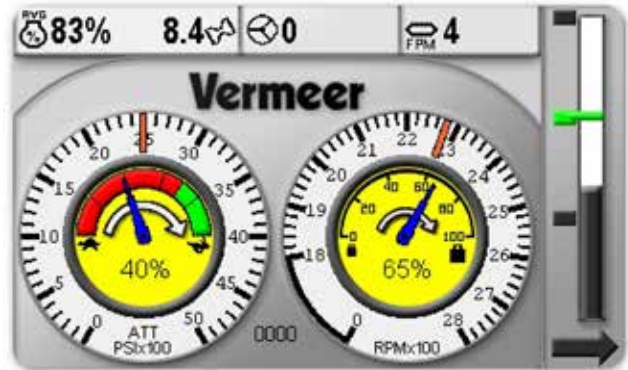
# SMART PERFORMANCE SMARTTEC



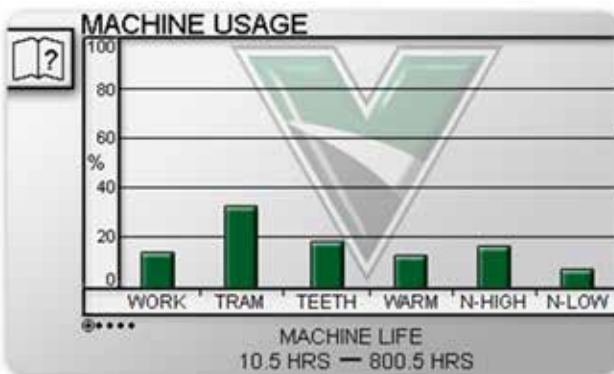
**SMARTTEC PERFORMANCE SOFTWARE** helps maximize machine performance by assisting operators with adjustments to machine controls, and monitoring and recording machine performance for future analysis by the machine owner or fleet manager.



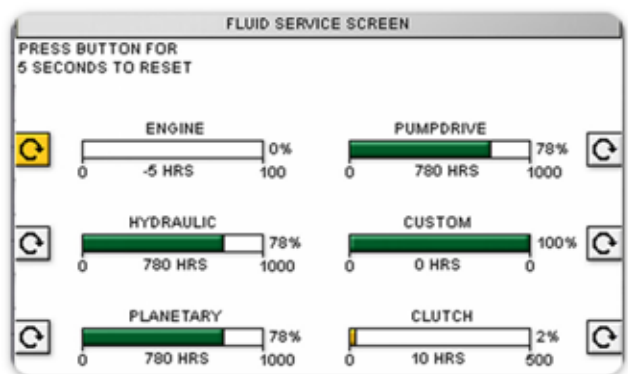
**CLEANER DASH DISPLAY.** Shows the operator the status of the most critical elements of machine performance.



**OPTIMIZE PERFORMANCE.** Yellow operator prompts provide visual cues to the operator for recommended control adjustment.



**MACHINE HISTORY.** Record of historical machine usage hours.



**OBSERVE FLUID LIFE.** Allows operator to monitor fluid life intervals for proactive maintenance.

SmartTEC is available on all Tier 4 Final compliant track trencher and Terrain Leveler® surface excavation machines equipped with the TEC® Plus operating system.

[VERMEER.COM](http://www.vermeer.com)



**EQUIPPED TO  
DO MORE.®**