



Confidence Plus

Asset Protection Program

GIVE YOURSELF LESS TO WORRY ABOUT AND MORE TIME TO FOCUS ON RUNNING YOUR OPERATION.

The Vermeer Confidence Plus® asset protection program gives your operation a major advantage — providing the ongoing service you need to protect the productivity and value of your Vermeer equipment. It helps you take control of expenses — and takes a load off your mind.

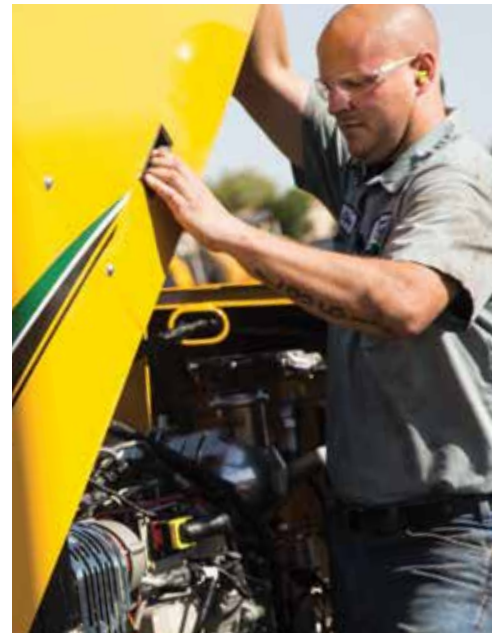
CONFIDENTLY BUDGET YOUR MACHINE MAINTENANCE COSTS.

Add Confidence Plus protection in your initial purchase finance package or lease. Or add it anytime within the standard one-year warranty period. When you finance your maintenance expenses, you can know and plan for a fixed cost upfront. Check with your local Vermeer dealer for specific model availability.

CONFIDENTLY KEEP YOUR EQUIPMENT AT PEAK PERFORMANCE.

Planned maintenance can help you extend your equipment's life. Vermeer dealer certified technicians conduct the required service and maintenance on your Vermeer equipment at recommended intervals and use only genuine Vermeer parts. The program includes the first four service intervals, along with all associated filters and fluids, at no charge.

- **Less stress.** Parts can be fixed or replaced before they fail.
- **Labor savings.** Your company's service personnel requirements could be reduced.
- **Increased operator efficiency.** Regular inspections can help identify and replace wear parts to help operators be more efficient.
- **Service across town or across the country.** Your equipment can be serviced and supported wherever it's on the job, by any Vermeer dealership.



Vermeer



**EQUIPPED TO
DO MORE.™**



Confidence Plus

Asset Protection Program

CONFIDENTLY ADD VALUE FOR RESALE.

The fully transferable protection plan, along with detailed maintenance records and machine history from your local Vermeer dealer, follow the machine to the next owner — adding value during resale.

CONFIDENTLY MAKE A SMARTER FINANCIAL CHOICE.

The Vermeer Confidence Plus program can pay for itself over time.

- **Flexible.** Choose 24- or 36-month extended warranty coverage options backed by Vermeer.
- **No machine hour restrictions.**
- **No-charge travel and diagnostics for selected contract period.**
On machines with a list price of \$65,000 and above receive up to \$200 travel and one-hour diagnostic coverage.

Talk to your Vermeer dealer today about adding the Vermeer Confidence Plus asset protection program to your next machine.

**YOU STAND BEHIND
YOUR WORK. VERMEER
IS HERE TO STAND
BEHIND YOU AND YOUR
VERMEER EQUIPMENT.
SO YOU CAN BE
CONFIDENT YOU'LL
GET MORE DONE AT A
LOWER COST. TODAY.
AND EVERY DAY.**

*“This is the best warranty package in the market!
Love the unlimited hours and fluid changes. We will
purchase it on every machine that we purchase from
Vermeer in the future.”*

**Dakota Directional Drilling
Ennis, TX USA
D20X22 Series II Navigator® HDD 06/06/2014**



| Confidence Plus