

GENUINE VERMEER GRINDER TIPS APPLICATIONS GUIDE



Vermeer®



EQUIPPED TO
DO MORE.®

GENUINE VERMEER GRINDER TIPS

Vermeer tip options help maximize productivity no matter what processing challenges you face, and our broad selection of grinder tips allows you to choose the right tip to meet the demands of your specific job — processing waste faster and more efficiently.



TURNING WASTE INTO A USEFUL BYPRODUCT REQUIRES INNOVATIVE SOLUTIONS, LIKE THE ONES YOU GET FROM VERMEER.

CARBIDE GRIT TIPS

Increased carbide coverage makes these tips extra tough — adding durability and longevity you can count on job after job. Vermeer now has three grit tips available: premium, pro and standard.



VERMEER PREMIUM

The premium grinder tips have the highest carbide content and feature increased welds on the ends and a single weld on the sides, delivering the longest life of Vermeer carbide grit tips.



VERMEER PRO

Pro grinder tips have both ends and sides welded to provide an intermediate lifespan.



VERMEER STANDARD

The standard grinder tips are designed to be an economical choice without side welds and offer a moderate lifespan.

VERMEER OFFERS HARDWARE AS TOUGH AS OUR TIPS, INCLUDING STANDARD AND HARD-FACED OPTIONS FOR OUR 7/8" BOLTS.

GET ADVICE. VERMEER RECYCLING SPECIALISTS AT YOUR LOCAL DEALERSHIP HAVE THE EXPERTISE AND KNOW-HOW TO HELP YOU FIND THE RIGHT GRINDER TIP FOR YOUR NEXT JOB.

PRODUCT NAME	PART NUMBER	MOUNT METHOD	APPLICATION		MATERIAL					
			PRIMARY GRIND	REGRIND	LOGS	LAND CLEARING	C&D	GREEN WASTE	PALM	
Block Tip (2) 7/8" Bolt, 2.8" x 5.5" (7.1 cm x 14 cm)										
Premium	180028327	Two 7/8" Bolts	●	●	○	●	●	●	●	○
Pro	163729781	Two 7/8" Bolts	●	●	○	●	●	●	●	○
Standard	180028330	Two 7/8" Bolts	●	●	○	●	●	●	●	○
Block Tip (2) 7/8" Bolt, 3.5" x 5.4" (8.9 cm x 13.7 cm)										
Premium	180027592	Two 7/8" Bolts	●	●	○	●	●	●	●	○
Pro	296371054	Two 7/8" Bolts	●	●	○	●	●	●	●	○
Standard	180027591	Two 7/8" Bolts	●	●	○	●	●	●	●	○
Block Tip (2) 3/4" Bolt, 2.8" x 5" (7.1 cm x 12.7 cm)										
Premium	180027478*	Two 3/4" Bolts	●	●	○	●	●	●	●	○
Pro	154994001	Two 3/4" Bolts	●	●	○	●	●	●	●	○
Standard	180027479	Two 3/4" Bolts	●	●	○	●	●	●	●	○
Block Tip with Rails (2) 5/8" Bolt, 2" x 3.5" (5.1 cm x 8.9 cm)										
Premium	180027476	Two 5/8" Bolts	●	●	○	●	●	●	●	○
Pro	155463001	Two 5/8" Bolts	●	●	○	●	●	●	●	○
Standard	180027477	Two 5/8" Bolts	●	●	○	●	●	●	●	○
Block Tip with 1.9" (4.8 cm) Rails (1) 7/8" Bolt, 3.1" x 3.7" (7.9 cm x 9.4 cm)										
Premium	163729972	One 7/8" Bolt	●	●	○	●	●	●	●	○
Pro	158813001	One 7/8" Bolt	●	●	○	●	●	●	●	○
Standard	163729973	One 7/8" Bolt	●	●	○	●	●	●	●	○
Block Tip Abrasion-Resistant (2) 7/8" Bolt, 3.5" x 5.5" (8.9 cm x 14 cm)	180015103	Two 7/8" Bolts				●	●	●	●	●
Block Tip Impact-Resistant (2) 7/8" Bolt, 3.5" x 5.4" (8.9 cm x 13.7 cm)	180012617	Two 7/8" Bolts	●	●	●					
Wing Tip (2) 7/8" Bolt, 4.5" x 5.6" (11.4 cm x 14.2 cm) Pro	296367135	Two 7/8" Bolts	●		●			○		
Block Tip with 2" (5.1 cm) Rails (1) 7/8" Bolt, 3" x 3.5" (7.6 cm x 8.9 cm) Pro	155462001	One 7/8" Bolt	●	●	○	●	●	●	●	○
Block Tip (1) 7/8" Bolt, 3" x 3" (7.6 cm x 7.6 cm) Premium	180027487	One 7/8" Bolt	●	●	○	●	●	●	●	○
Block Tip (1) 7/8" Bolt, 3" x 3" (7.6 cm x 7.6 cm) Pro	139982001	One 7/8" Bolt	●	●	○	●	●	●	●	○
Block Tip Abrasion-Resistant (1) 7/8" Bolt, 3" x 3.5" (7.6 cm x 8.9 cm)	163621577	One 7/8" Bolt				●	●	●	●	●
Block Tip Impact-Resistant w/Rails (1) 7/8" Bolt, 3" x 3.6" (7.6 cm x 9.1 cm)	163632942	One 7/8" Bolt	●	●	●					
Tee Wing Tip (1) 7/8" Bolt, 4.1" x 3.7" (10.4 cm x 9.4 cm) Pro	296367152	One 7/8" Bolt	●		●	●				

*This premium block tip has a different weld pattern than other premium tips. Please note that it will have a break in the side weld pattern, but still contains an increased volume of grit along the weld path.

● = Primary Use ○ = Secondary Use

GRINDER TIP OPTIONS



WIDE BLOCK TIPS. Wide block tips are the most common in the industry. They can be used in a variety of applications such as land clearing, regrind, pallets, compost and green waste. Wide block tips can be flipped for double the life.

PN 180027592 shown



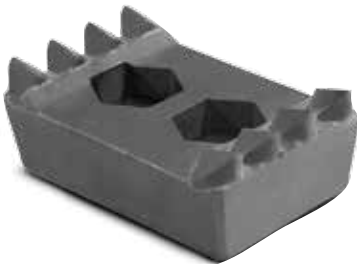
ABRASION-RESISTANT TIPS (A/R). Abrasion-resistant tips are used when highly abrasive material is being processed. Their flat face design, impregnated with tungsten carbide crystals in the casting block, is best suited for applications that contain sand, dirt and other highly abrasive materials. A/R tips can be flipped for double the life.

PN 180015103 shown



WING TIPS. Wing tips have a unique design with an overlay of carbide that provides an effective solution for processing large-diameter woody material — a narrow center section helps the tip penetrate the log, then the wings clean out the remainder. Wing tips can be flipped for double the life.

PN 296367135 shown



IMPACT-RESISTANT TIPS (I/R). Impact-resistant tips offer an alternative to wing tips and are used to process large-diameter material. Their carbide inserts are very hard but also brittle, and are not intended to be used when contaminants are prevalent. I/R tips are cost-effective, offering dual side use.

PN 180012617 shown



NARROW BLOCK TIPS. Narrow block tips only in the standard configuration are available for tub grinders and select horizontal grinders. They have an overlay of carbide along the sides of the block, making them an effective solution for processing large-diameter woody material. They're cost-effective, offering dual side use.

PN 180028327 shown

1-866-VERMEER | VERMEER.COM

Vermeer Corporation reserves the right to make changes in engineering, design and specifications; add improvements; or discontinue manufacturing at any time without notice or obligation. Vermeer, the Vermeer logo and Equipped to Do More are trademarks of Vermeer Manufacturing Company in the U.S. and/or other countries. © 2016 Vermeer Corporation. All Rights Reserved. Printed in the U.S.A. Please recycle.



EQUIPPED TO
DO MORE.