

THE ROAD TO

Vermeer®

Vermeer®



Vermeer Manufacturing Company

1210 Vermeer Road East
P.O. Box 200

Pella, Iowa 50219 U.S.A.

Phone: (641) 628-3141

Fax: (641) 621-7734

International fax: +(641) 621-7730

www.vermeer.com

WELCOME

For a little over 50 years, Vermeer Manufacturing Company has been a big part of the community of Pella and the Iowa landscape. Vermeer was founded on the simple philosophy of building quality, innovative equipment designed to solve problems.

Today, our proud tradition of producing underground, environmental, and hay harvesting products has grown to meet the needs of customers worldwide. On your way to Pella, you'll probably see our machines working in cities and rural areas, or pass truckloads of Vermeer equipment enroute to dealers and distributors. Have a safe trip and enjoy your visit to Vermeer.

TRAVEL ASSISTANCE

Vermeer Travel Center

515-243-5083 (Monday-Friday)
800-373-5083 (Monday-Friday)
800-247-3950 (after hours/weekends)

Classic Aviation, Inc.

2119 Airport Rd.
Pella, IA 50219
641-628-9393

Road Conditions

641-288-1047

Highway Patrol

800-525-5555
From Cell Phone: *55

RENTAL CARS

Avis

Des Moines Airport
515-245-2585
800-917-2847

Enterprise

Pella
641-628-8280
Des Moines Airport
515-256-5665
800-736-8222

National

Des Moines Airport
515-256-5353
800-328-4300

Hertz

Des Moines Airport
515-285-9650
800-654-3131

Budget

Des Moines Airport
515-287-2612
800-527-0707



VERMEER GLOBAL PAVILION

DES MOINES HOTELS

Holiday Inn Airport

across from DM airport
6111 Fleur Dr.
Des Moines, IA 50321
515-287-2400
800-248-4013

Embassy Suites

downtown
101 E. Locust St.
Des Moines, IA 50309
515-244-1700
800-421-9871

The Radisson

by Des Moines airport
6800 Fleur Dr.
Des Moines, IA 50321
515-285-7777
800-557-7048

Marriott

downtown
700 Grand Ave.
Des Moines, IA 50309
515-245-5500
800-228-9290

PELLA HOTELS

AmeriHost Inn & Suites

2104 Washington
641-628-0085

Strawtown Inn

1111 Washington St.
641-621-9500

Holiday Inn Express

2508 Bos Landen Dr.
641-628-4853
800-465-4329

Comfort Inn & Suites

910 W. 16th St., Hwy 163,
Exit 40
641-621-1421

Country Inn & Suites

315 Roosevelt Rd., Hwy
163, Exit 42
641-620-1111

Royal Amsterdam

705 E. 1st St.
641-620-8400

WELCOME

FROM THE NORTH - MINNEAPOLIS

1. Take I-35 South to I-80 East (Exit 87A)
2. Follow I-80 East for 2 1/2 miles to Hwy 65 South (Exit 141)
3. Follow Hwy 65 South for 4 miles to Hwy 163 East (Exit 79)
4. Continue on Hwy 163 East for 39 miles to Pella
5. From Hwy 163 East, take Exit 44 and turn left (north) at stop sign onto Hwy 102 East
6. Follow Hwy 102 East for 1 mile to stop sign at Vermeer Rd.
7. Turn left (west) onto Vermeer Rd. and Vermeer Manufacturing is on the right

FROM THE WEST - NEBRASKA

1. Take I-80 East to I-235 East (Exit 123A)
2. Follow I-235 East for 10 miles and exit onto E. University Ave./Hwy 163 East
3. Continue on E. University Ave./Hwy 163 East for 44 miles to Pella
4. From Hwy 163 East, take Exit 44 and turn left (north) at stop sign onto Hwy 102 East
5. Follow Hwy 102 East for 1 mile to stop sign at Vermeer Rd.
6. Turn left (west) onto Vermeer Rd. and Vermeer Manufacturing is on the right

FROM THE SOUTH - KANSAS CITY

1. Take I-35 North to I-235 East (Exit 72A)
2. Follow I-235 East for 9 1/2 miles and exit onto E. University Ave./Hwy 163 East
3. Continue on E. University Ave./Hwy 163 East for 44 miles to Pella
4. From Hwy 163 East, take Exit 44 and turn left (north) at stop sign onto Hwy 102 East
5. Follow Hwy 102 East for 1 mile to stop sign at Vermeer Rd.
6. Turn left (west) onto Vermeer Rd. and Vermeer Manufacturing is on the right

FROM THE EAST - IOWA CITY

1. Take I-80 West to Exit 173
2. From exit ramp, turn left (south) at stop sign onto Hwy 224/T-22
3. Follow Hwy T-22 for 7 miles and turn right (west) at stop sign onto Hwy F-62
4. Follow Hwy F-62 for 3 miles and turn left (south) at stop sign onto Hwy T-14
5. Follow Hwy T-14 (which becomes Main St. in Pella) for 13 miles to Washington St.
6. Turn left (east) onto Washington St. which will turn into Vermeer Rd.
7. Follow Vermeer Rd. 1 mile and Vermeer Manufacturing is on the left

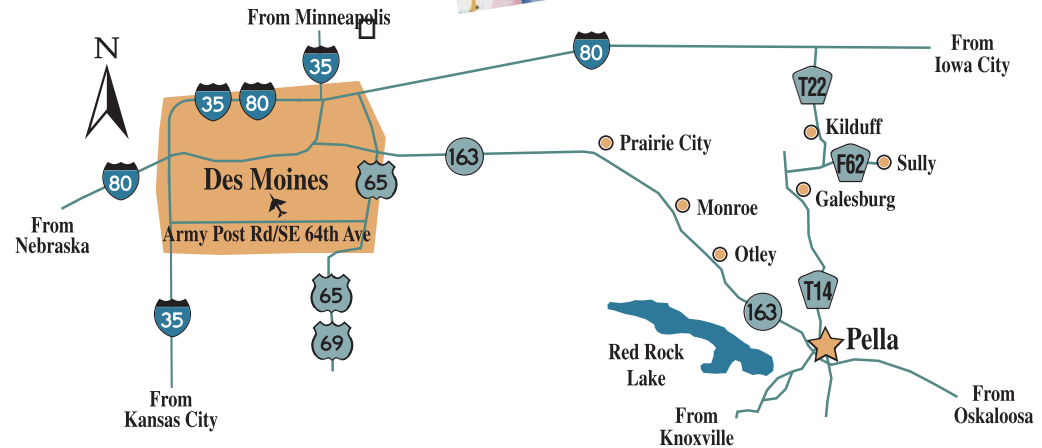
FROM THE DES MOINES AIRPORT

1. Exit the airport turning right (south) onto Fleur Dr.
2. Follow Fleur Dr. 2 miles to Hwy 5.
3. Take Hwy 5 East for 3 miles.
4. Continue on Hwy 65 north/east for approximately 15 miles to Hwy 163 East (Exit 79)

5. Continue on Hwy 163 East for 39 miles to Pella
6. From Hwy 163 East, take Exit 44 and turn left (north) at stop sign onto Hwy 102 East
7. Follow Hwy 102 East for 1 mile to stop sign at Vermeer Rd.
8. Turn left (west) onto Vermeer Rd. and Vermeer Manufacturing is on the right.

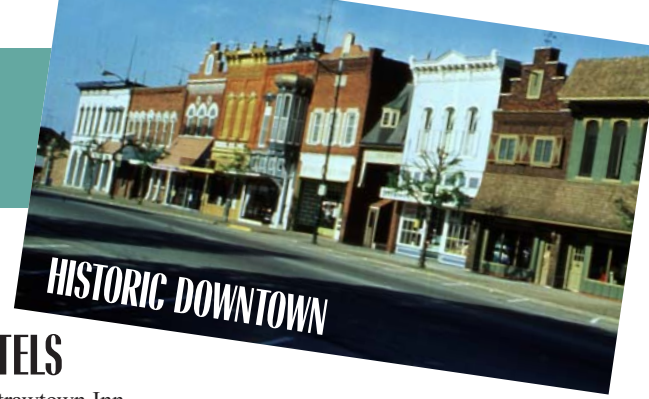
ALTERNATE ROUTE FROM HWY 163 TO PELLA

1. From Hwy 163 East, take Exit 40
2. Turn left (east) at stop sign onto Washington St./Business Hwy 163
3. Follow Washington St. for 2 miles through downtown Pella.
4. Continue on Washington Street which will turn into Vermeer Rd.
5. Follow Vermeer Rd. 1 mile and Vermeer Manufacturing is on the left

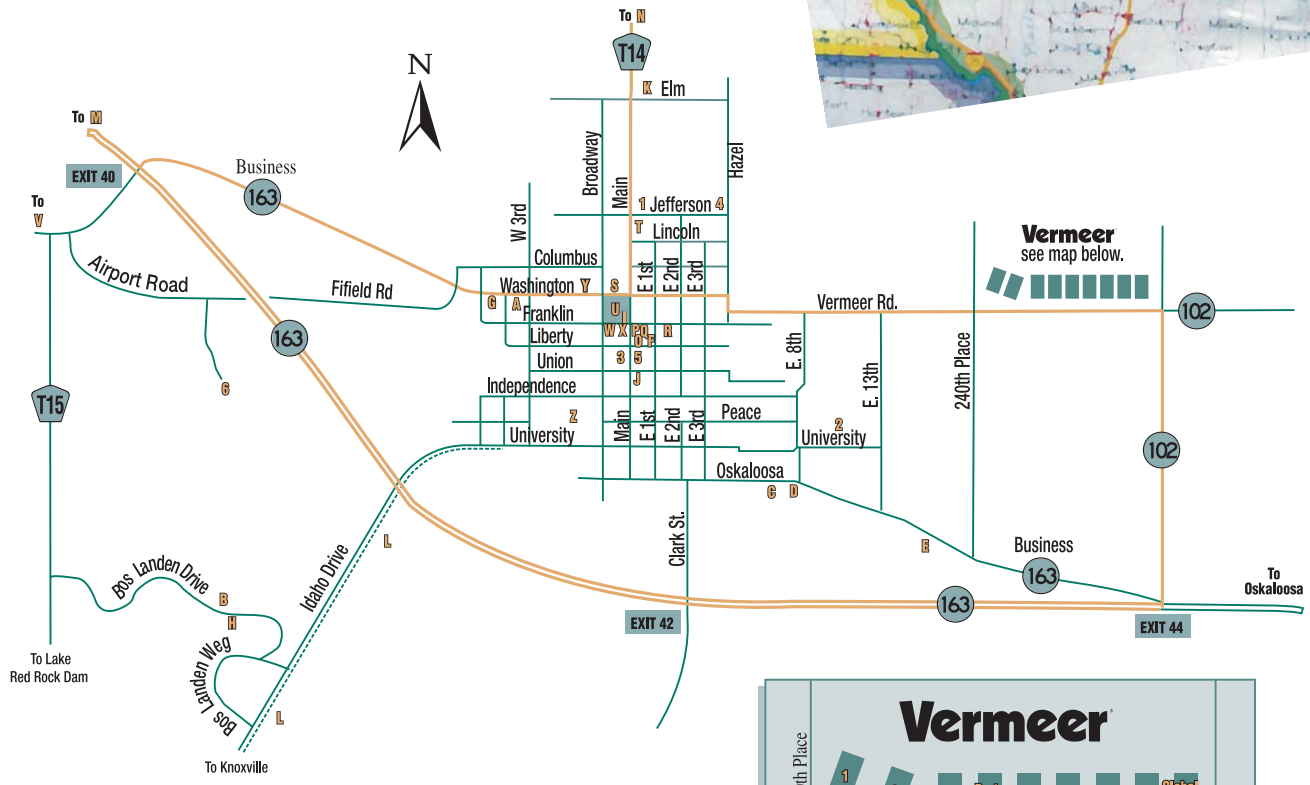


TO CENTRAL IOWA

TO PELLA



HISTORIC DOWNTOWN



HOTELS

- A—Strawtown Inn
- B—Holiday Inn Express
- C—Amerihost Inn & Suites
- D—Country Inn & Suites
- E—Comfort Inn & Suites
- F—Royal Amsterdam

ATTRACTIONS

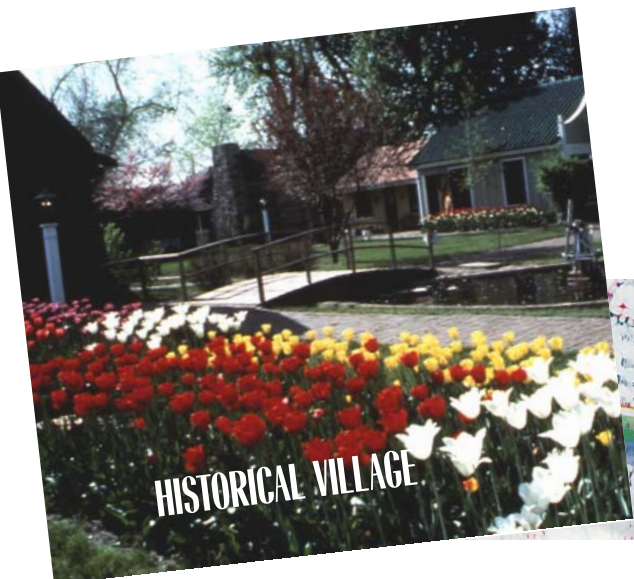
- O—Molengracht (Dutch Canal)
- P—Klokkenspel (Musical Clock)
- Q—Opera House
- R—Historical Village
- S—Scholte House
- T—Sunken Gardens
- U—Central Park
- V—Cordova Park
- Observation Tower
- W—Jaarsma Bakery
- X—Vander Ploeg Bakery
- Y—Red Ribbon Antique Mall
- Z—Central College

RESTAURANTS

- F—J. Benjamin's
- G—Dr. Salami's
- H—Grille on the Green
- I—Windmill Cafe
- J—El Charro

RECREATION

- H—Bos Landen Golf & Fitness Center
- K—Pella Golf and Country Club
- L—Volksweg Recreational Trail
- M—Pella Gun Club
- N—Lake Prairie Hunting Preserve



HISTORICAL VILLAGE



LAKE RED ROCK



BOS LANDEN GOLF RESORT