



# ELECTRIC SOLUTIONS

**Vermeer**



**EQUIPPED TO  
DO MORE.**



# YOUR ELECTRIC SOLUTIONS PROVIDER

Many stationary grinding operations are turning to electric-powered machines to manage cost of operation. When considering this option for your site, there are several factors you need to weigh, such as access to a power source and the material flow at your site. You may find the benefits of electric products over traditional diesel-powered machines to be advantageous to your operation.

## ELECTRIC ADVANTAGE

- Electric-powered equipment eliminates the need for common maintenance costs associated with diesel engines, such as oil and filter replacements.
- In comparison to diesel machines, the noise level on electric-powered equipment is significantly decreased, and they do not produce as much heat or emissions.
- Electric motors can be more reliable and require less frequent maintenance intervals.

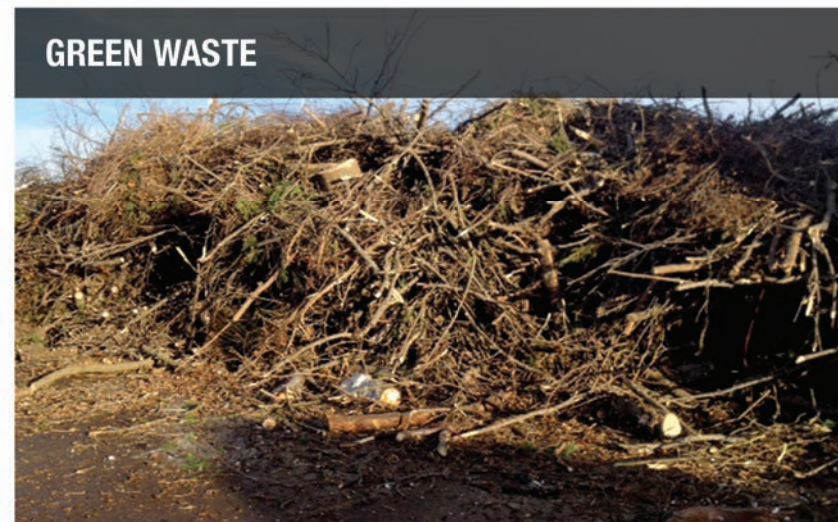
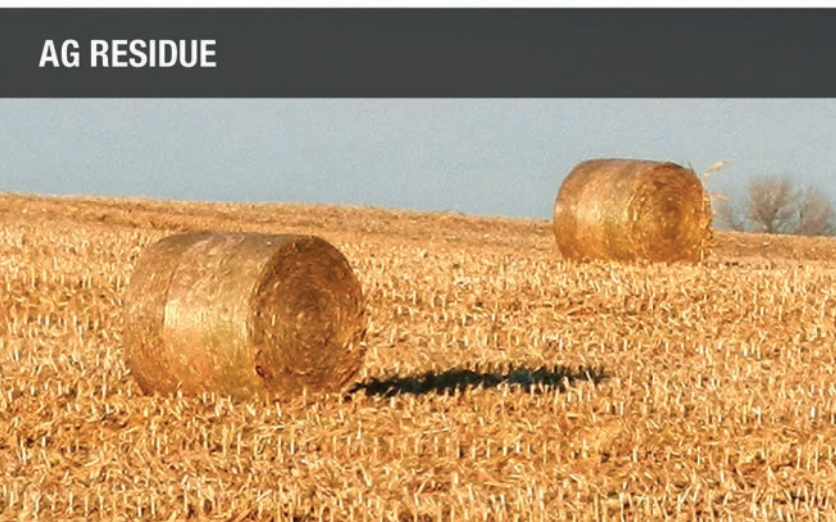
When you make the decision that electric-powered equipment is right for you, it's important that you have a partner you can trust to provide this equipment and the support to back it – a partner like Vermeer.





## FITTING YOUR FEEDSTOCK

With our years of experience in the recycling, forestry and biomass markets, Vermeer is equipped with the knowledge and product offerings to help you handle a variety of feedstock material.

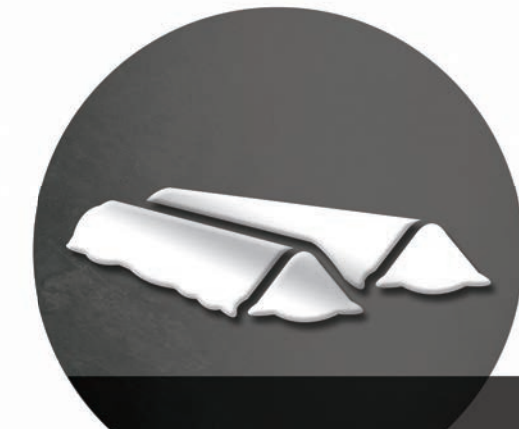


### THE VERMEER ADVANTAGE

- With the option of both horizontal or tub electric grinders and electric trommel screens, Vermeer can provide the equipment your feedstock requires.
- Several electric grinder sizes and conveyor options as well as options for trommels help you meet your productivity goals.
- An optional grapple loader on our tub grinders can help make your stationary grinding site more efficient.

## PREPARING YOUR END PRODUCT

As important as the incoming product is to defining your equipment needs, understanding the end use of the finished material also helps. Vermeer has years of experience in the industries you serve and can provide the options to fit your end-use requirements.



### THE VERMEER ADVANTAGE

- A wide range of grinder screen sizes is available from Vermeer to meet your product sizing needs.
- In addition to the standard conveyor options on Vermeer electric grinders, our special team of engineers can create layout recommendations and concepts customized for your site.
- Electric trommel screens are also available to meet product sizing needs.



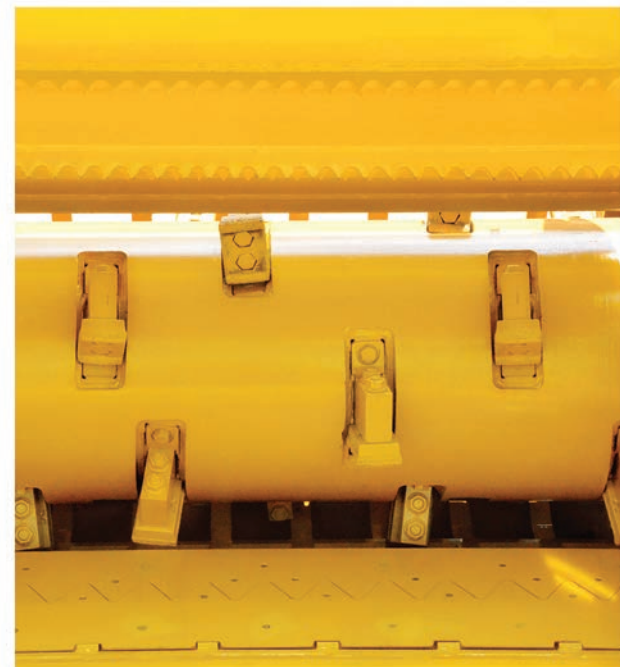
## COMMITMENT TO OUR CUSTOMERS

As your stationary operation looks to electric-power, Vermeer is your partner for the equipment expertise you need. With a dedicated team of engineers who can review your unique material, site and power needs, Vermeer can provide equipment recommendations specifically for your operation. Whether you're looking at transitioning to electric equipment, need to replace a component in your system, or are looking at a system design, Vermeer is equipped to be your electric solutions equipment partner.

To complement our dedicated electric solutions team, Vermeer has a rich history in organic material processing. Through our decades of experience in the industry, we are able to provide the features you need for a productive worksite. And with a regional and local dealer support network, you can rest assured Vermeer has parts and service personnel nearby, ready to support your project.

### THE VERMEER ADVANTAGE

- The motor starter panel provides options to configure a control system that best fits your application – whether that's a soft-start or VFD starter panel.
- The duplex drum design on tub grinders offers reversible hammers and tips for increased component life over single-sided designs.
- Thrown object deflectors (TOD) and thrown object restraint systems (TORS) on Vermeer grinders help reduce the quantity and distance of thrown material debris.



Your personalized equipment and support plan awaits.

Your Productivity Advisor



EQUIPPED TO DO MORE.™

**Vermeer®**



**EQUIPPED TO  
DO MORE.®**

Vermeer Corporation is an equipment manufacturer and provides recommendations on equipment site layout and material utilization.  
Site owner should always consult a qualified electrician familiar with local and national code requirements for such installations.

Equipment shown is for illustrative purposes only and may display optional accessories or components. Please contact your local Vermeer dealer for more information on machine specifications.

Vermeer Corporation reserves the right to make changes in engineering, design and specifications; add improvements; or discontinue manufacturing at any time without notice or obligation.

Vermeer, the Vermeer logo and Equipped to Do More are trademarks of Vermeer Manufacturing Company in the U.S. and/or other countries.  
© 2016 Vermeer Corporation. All Rights Reserved.